



Islamic Emirate of Afghanistan  
Ministry of Transport & Aviation  
Afghanistan meteorological Department  
Forecast Division  
Satellite General Management



Daily reports of Satellite imagery analysis. Date & Time: 24/01/2026, 06:00 UTC

No	Region	Air Mass	Dust Storm	Thunder storm	Cloud	Fog	Water Vapor	Cyclone & Anticyclone	Jetstream	Comments
1	North	✓	X	X	✓	X	✓ wet/clod	✓	X	High- Level Cloud
2	South	✓	X	X	✓	X	✓ moderate	X	X	High- Level Cloud
3	West	✓	X	X	✓	X	✓ moderate	X	X	High- Level Cloud
4	East	✓	X	X	✓	X	✓ wet/clod	X	X	
5	central	✓	X	X	✓	X	✓ wet/clod	X	X	High- Level Cloud
6	Northeast	✓	X	X	✓	X	✓ wet/clod	X	X	High- Level Cloud
7	Southeast	✓	X	X	✓	X	✓ moderate	X	X	High- Level Cloud
8	Northwest	✓	X	X	✓	X	✓ moderate	✓	X	High- Level Cloud
9	Southwest	✓	X	X	✓	X	✓ moderate	X	X	High- Level Cloud

**Details:** according to satellite imagery analysis the all-regions have cold air mass. The all- regions have cloudy sky. The all-regions have moderate water vapor with the exception of northern, eastern, central, northeastern regions are wet. The northern, northwestern regions have a low-pressure system.

**Note:** X (Not existing phenomena), ✓ (exist phenomena)

- Reported by: Esmatullah Mohammadi

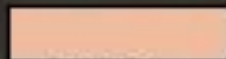
UTC: 2026-01-23 20:45

AirMass



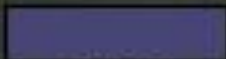
Thick,

high-level cloud



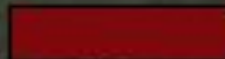
Thick,

mid-level cloud



Thick,

low-level cloud



Jet



Cold Airmass



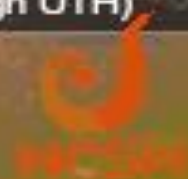
Warm Airmass

(high UTH)

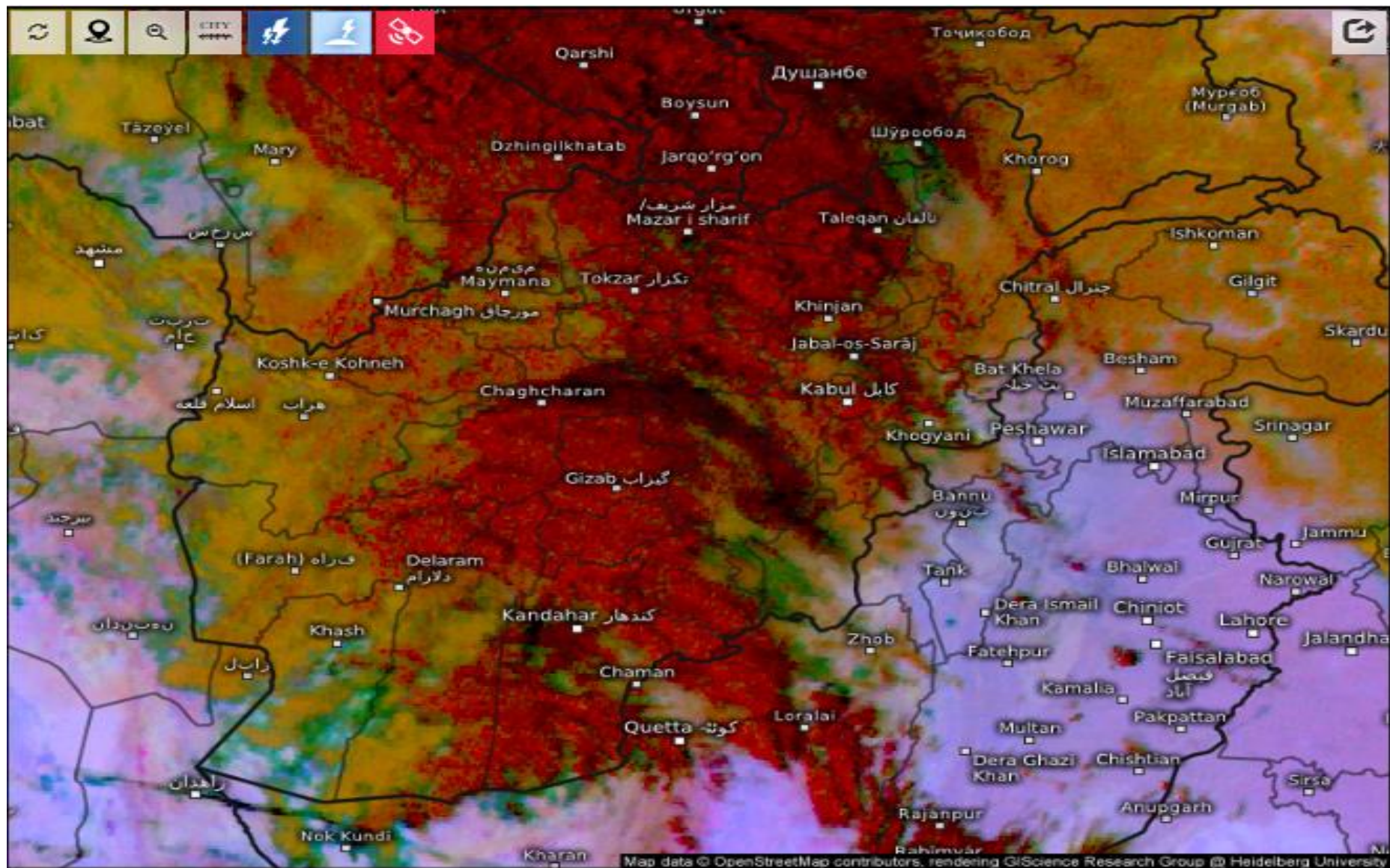


Wa

FY-4B AirMass RGB Composite (From W



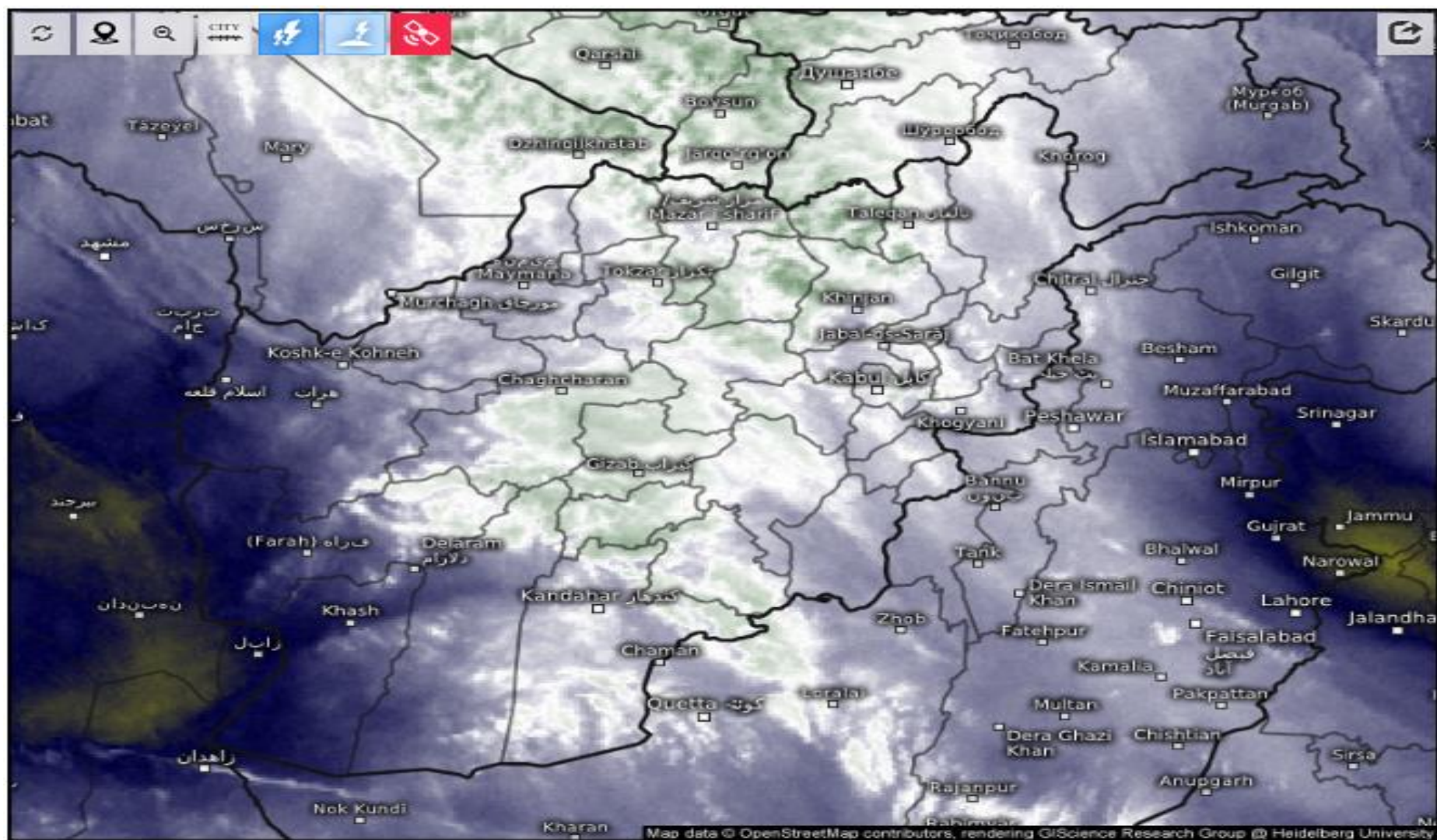




Satellite Dust 

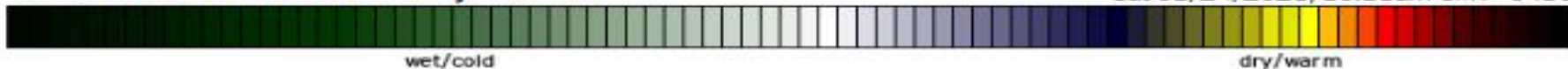
Sat 01/24/2026, 10:15am GMT+0430





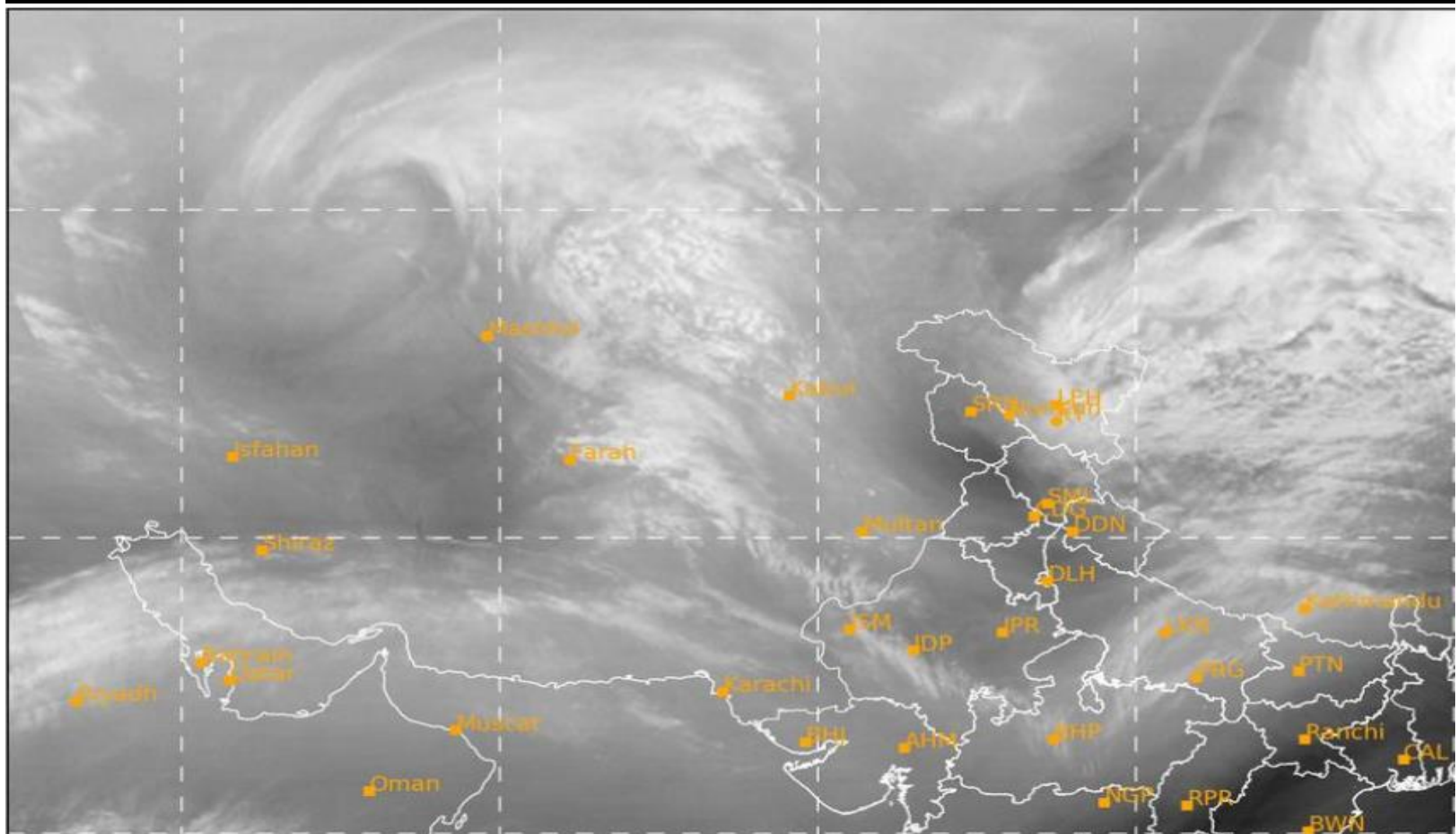
## Satellite Water Vapor

Sat 01/24/2026, 10:15am GMT+0430



SAT : INSAT-3DR IMG  
IMG\_WV 6.8 um  
L1C Mercator

24-01-2026/(0445 to 0512) GMT  
24-01-2026/(1015 to 1042) IST



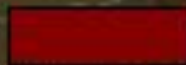


UTC: 2026-01-23 21:15

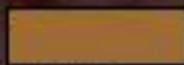
Dust



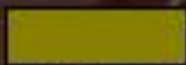
Dust



High-level cloud



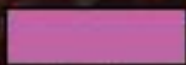
Thick,  
mid-level cloud



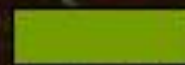
Thin,  
mid-level cloud



Ocean



Land



Low-level cloud



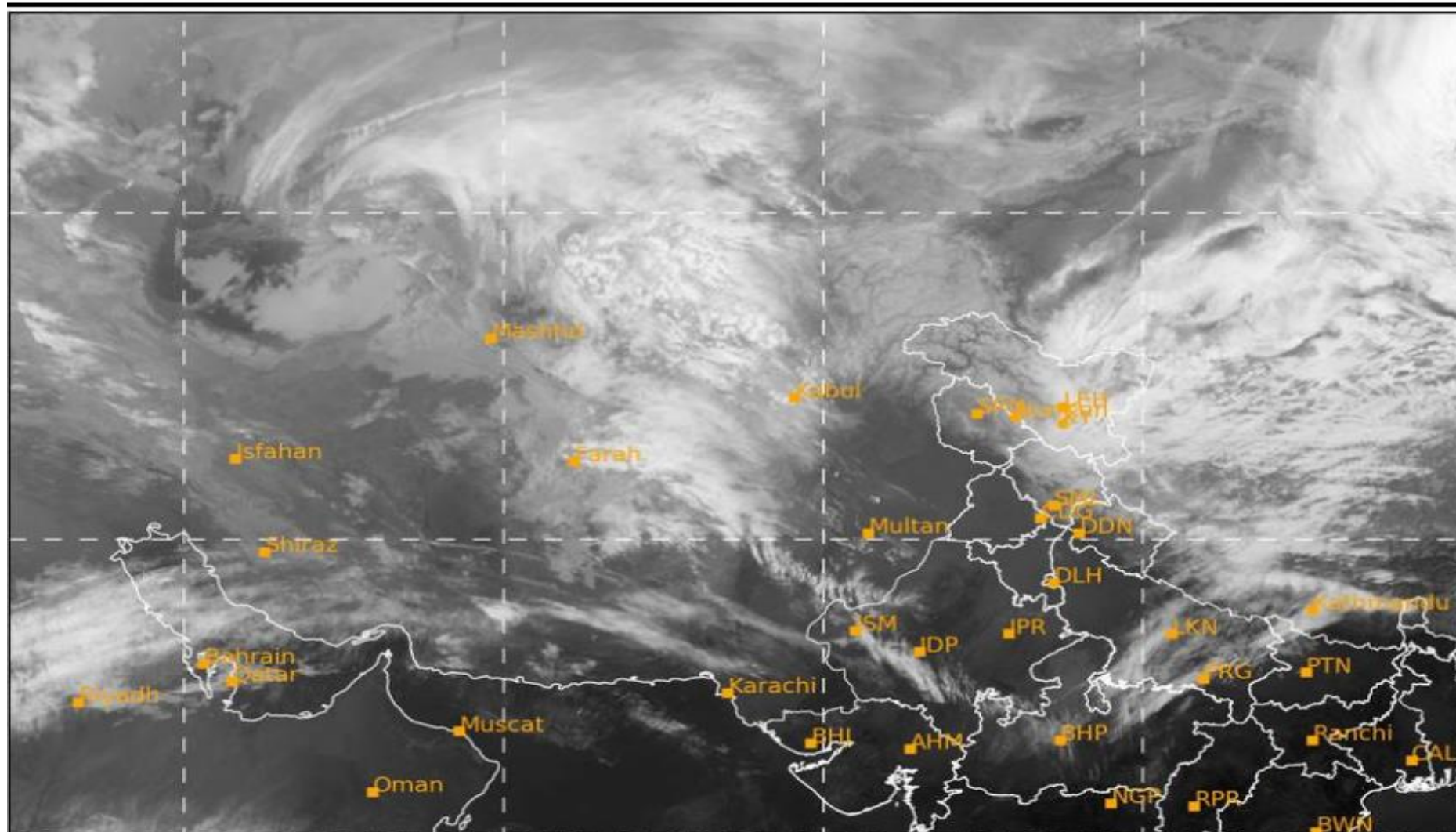
Cirrus

**FY-4B Dust RGB Composite (From WMO)**



SAT : INSAT-3DR IMG  
IMG\_TIR1 10.8 um  
L1C Mercator

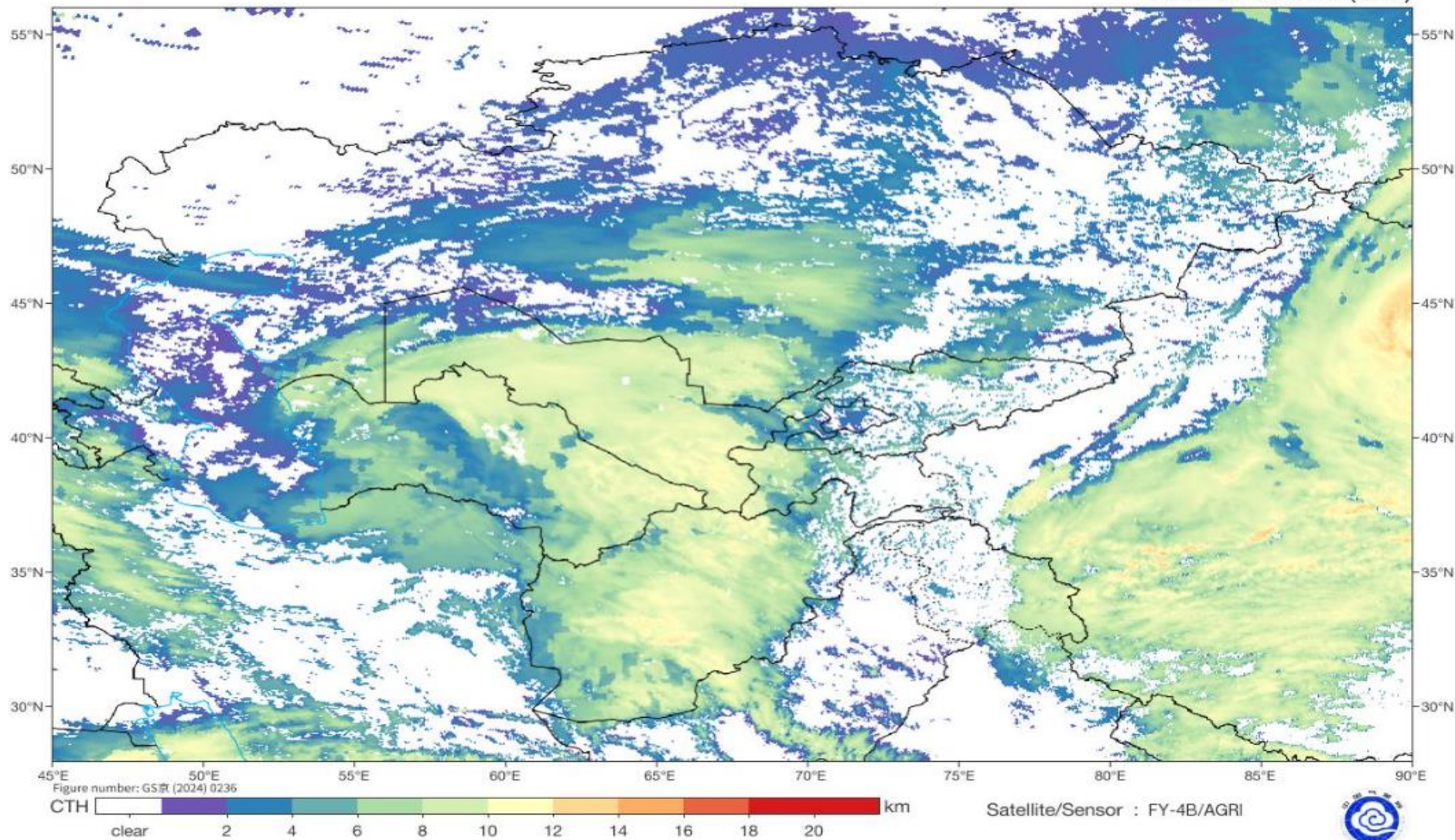
24-01-2026/(0445 to 0512) GMT  
24-01-2026/(1015 to 1042) IST



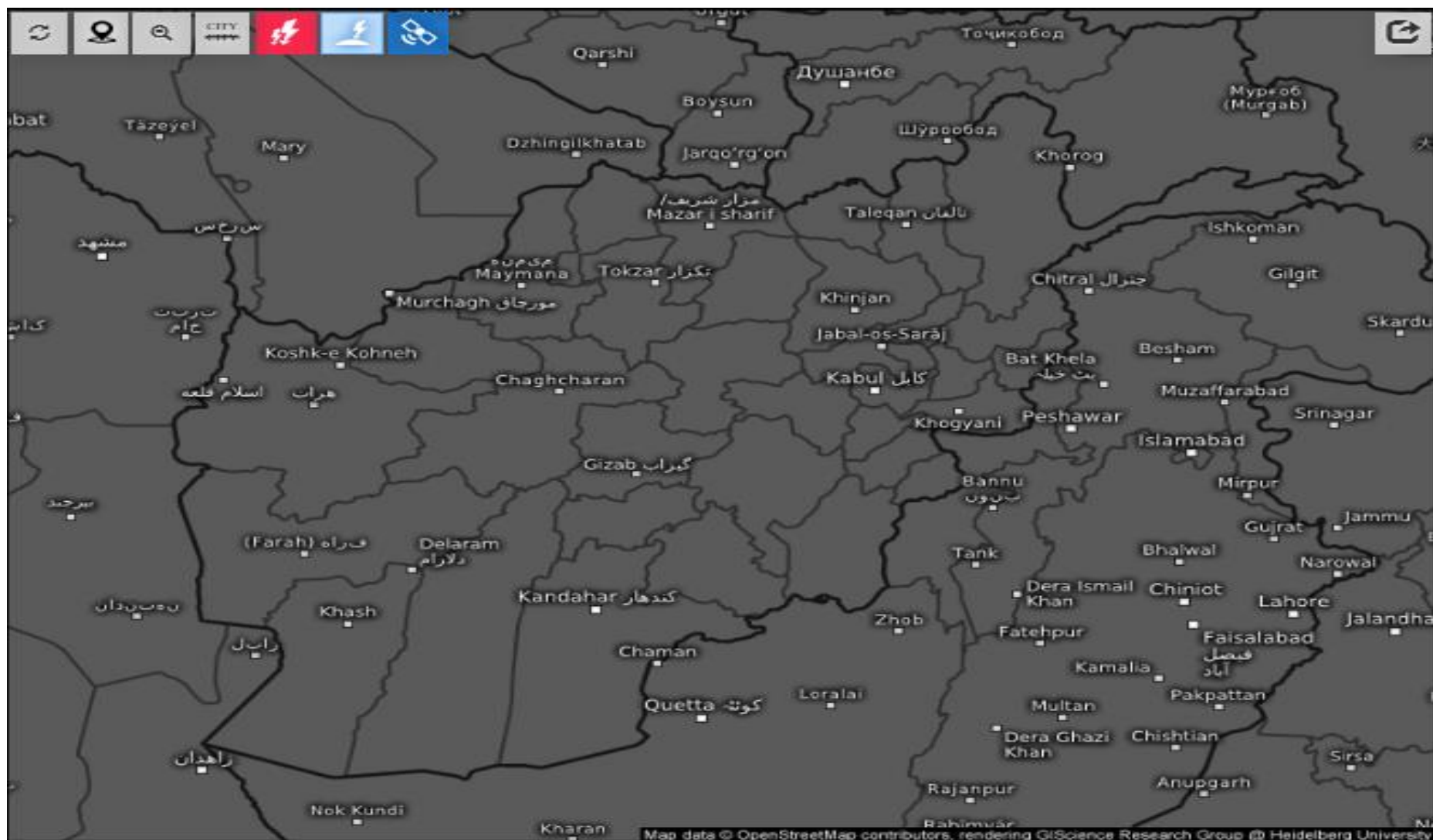


# Cloud Top Height

2026-01-24 05:30(UTC)







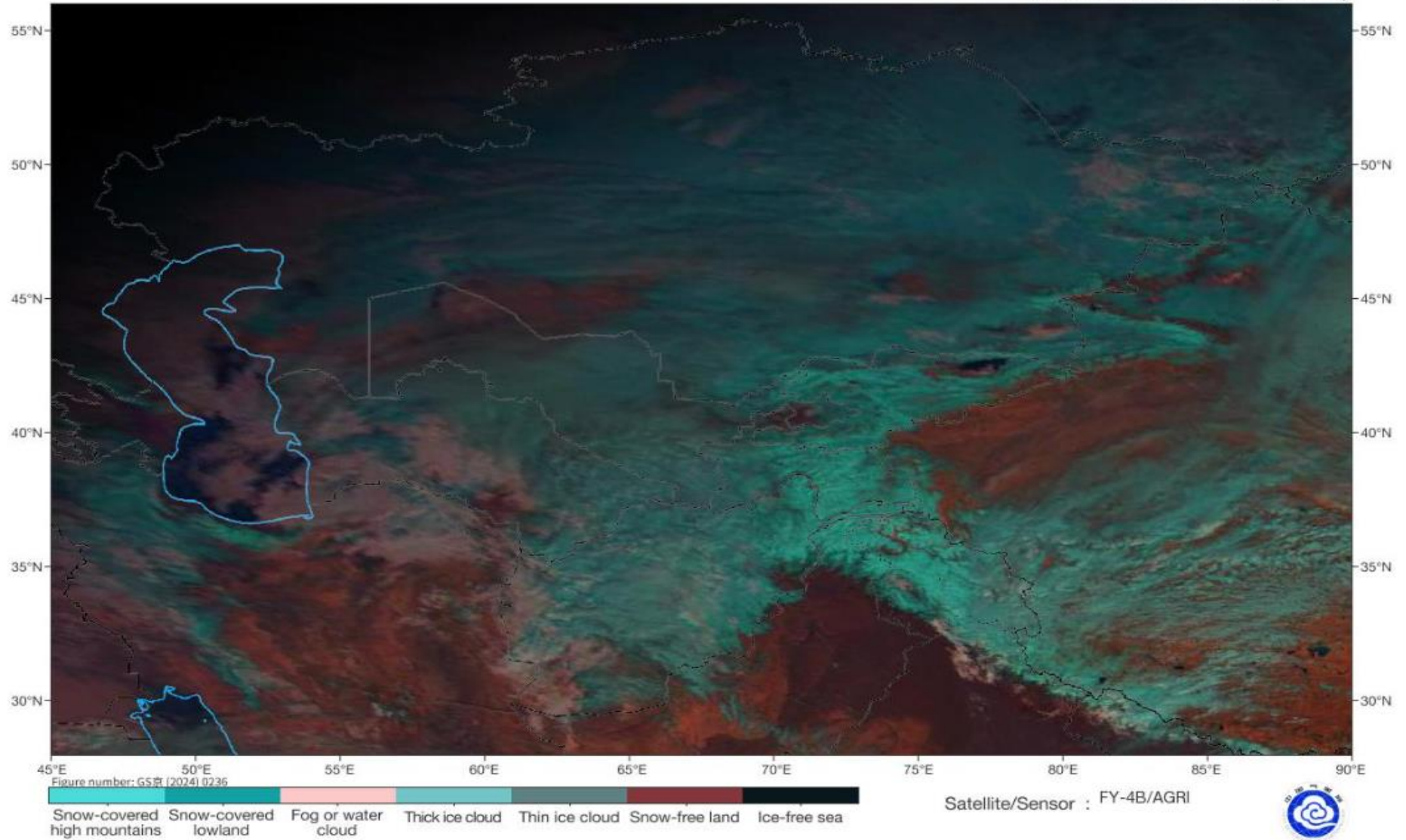
Age of lightning (minutes) 

Sat 01/24/2026, 10:30am GMT+0430



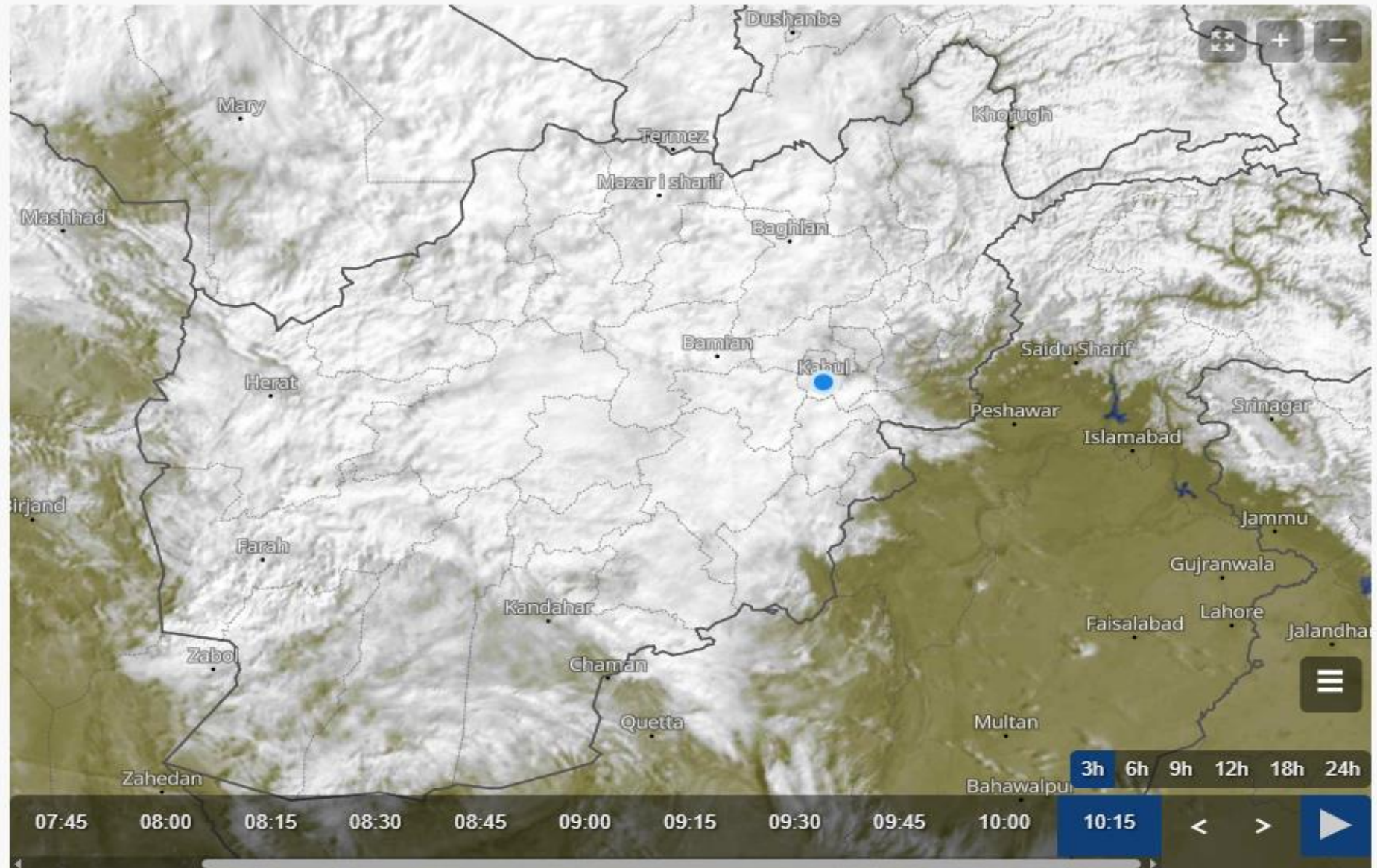
# Fog Identification

2026-01-24 05:30(UTC)





## Live satellite map, Afghanistan





**EPS 500mb Geopotential Height & Anomaly (dam) (based on CFSR 1981-2010 Climatology)**

Init: 12z Jan 22 2026 Forecast Hour: [48] valid at 12z Sat, Jan 24 2026

TROPICALTIDBITS.COM

