



Islamic Emirate of Afghanistan
Ministry of Transport & Aviation
Afghanistan meteorological Department
Forecast Division
Satellite General Management



Daily reports of Satellite imagery analysis. Date & Time: 31/12/2025, 03:00 UTC

No	Region	Air Mass	Dust Storm	Thunder storm	Cloud	Fog	Water Vapor	Cyclone & Anticyclone	Jetstream	Comments
1	North	✓	X	X	✓	X	√ moderate	X	X	
2	South	✓	X	X	✓	X	√ weak	X	X	
3	West	✓	X	X	✓	X	√ weak	X	X	
4	East	X	X	X	✓	X	√ moderate	X	X	
5	central	X	X	X	✓	X	√ moderate	X	X	
6	Northeast	✓	X	X	✓	X	√ moderate	X	X	
7	Southeast	X	X	✓	✓	✓	√ moderate	X	X	
8	Northwest	✓	X	X	✓	X	√ moderate	X	X	
9	Southwest	✓	X	X	X	X	√ weak	X	X	

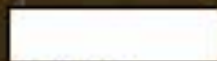
Details: according to satellite imagery analysis the northern, northeastern, northwestern regions have cold air mass. The southern, western, southwestern regions have warm air mass with (Low UTH). The southeastern region has thunder storm. The northern, southern, western, eastern, northeastern, southeastern, northwestern regions have cloudy sky. The southeastern regions have Fog. The northern, western, eastern, central, southeastern, northwestern regions have moderate water vapor and the southern, western, southwestern regions are weak.

Note: X (Not existing phenomena), √ (exist phenomena)

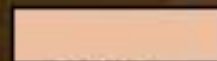
- Reported by: Esmatullah Mohammadi

UTC: 2025-12-30 19:15

AirMass



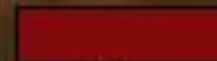
Thick,
high-level cloud



Thick,
mid-level cloud



Thick,
low-level cloud



Jet



Cold Airmass



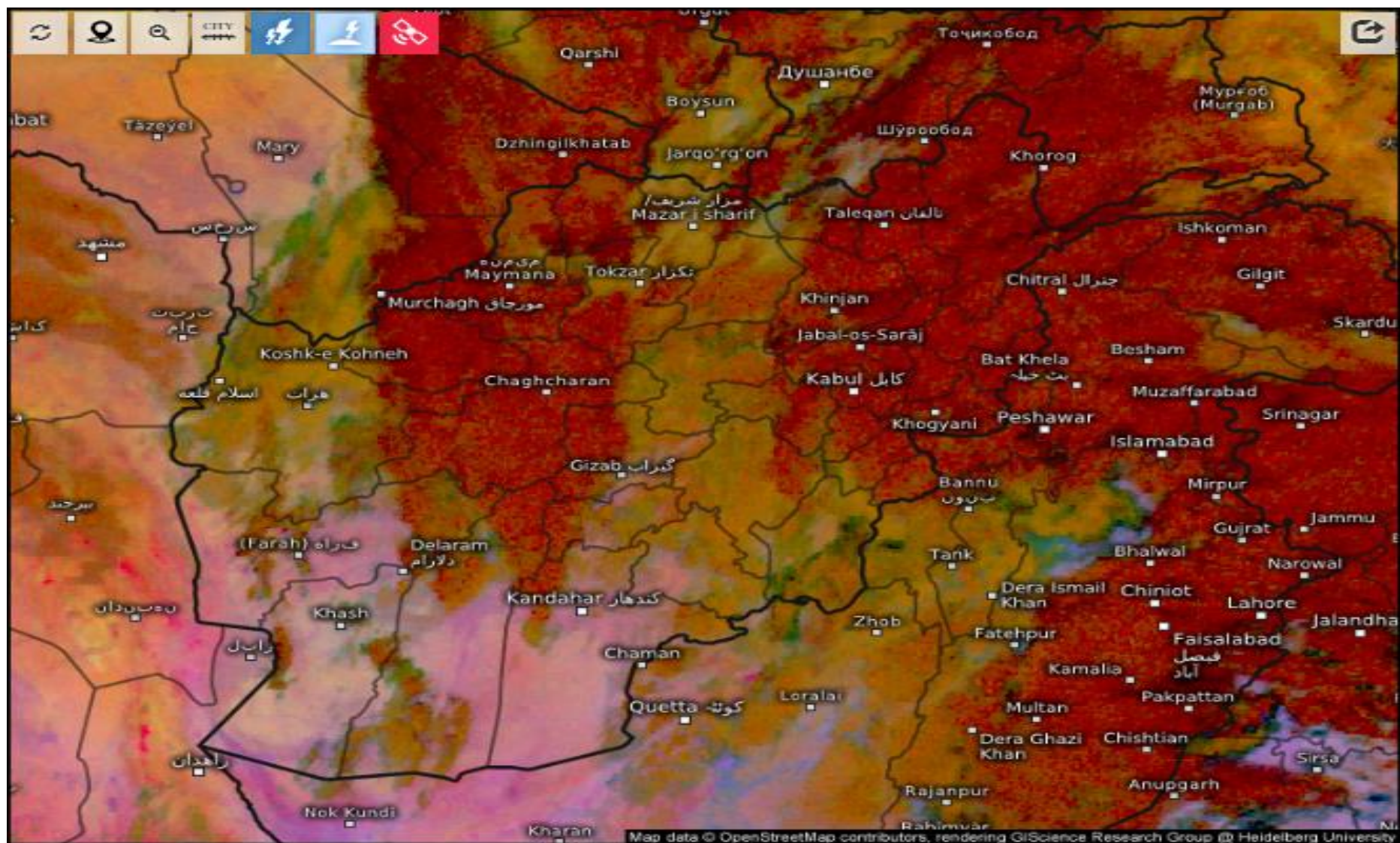
Warm Airmass
(high UTH)



Warm
(low UTH)

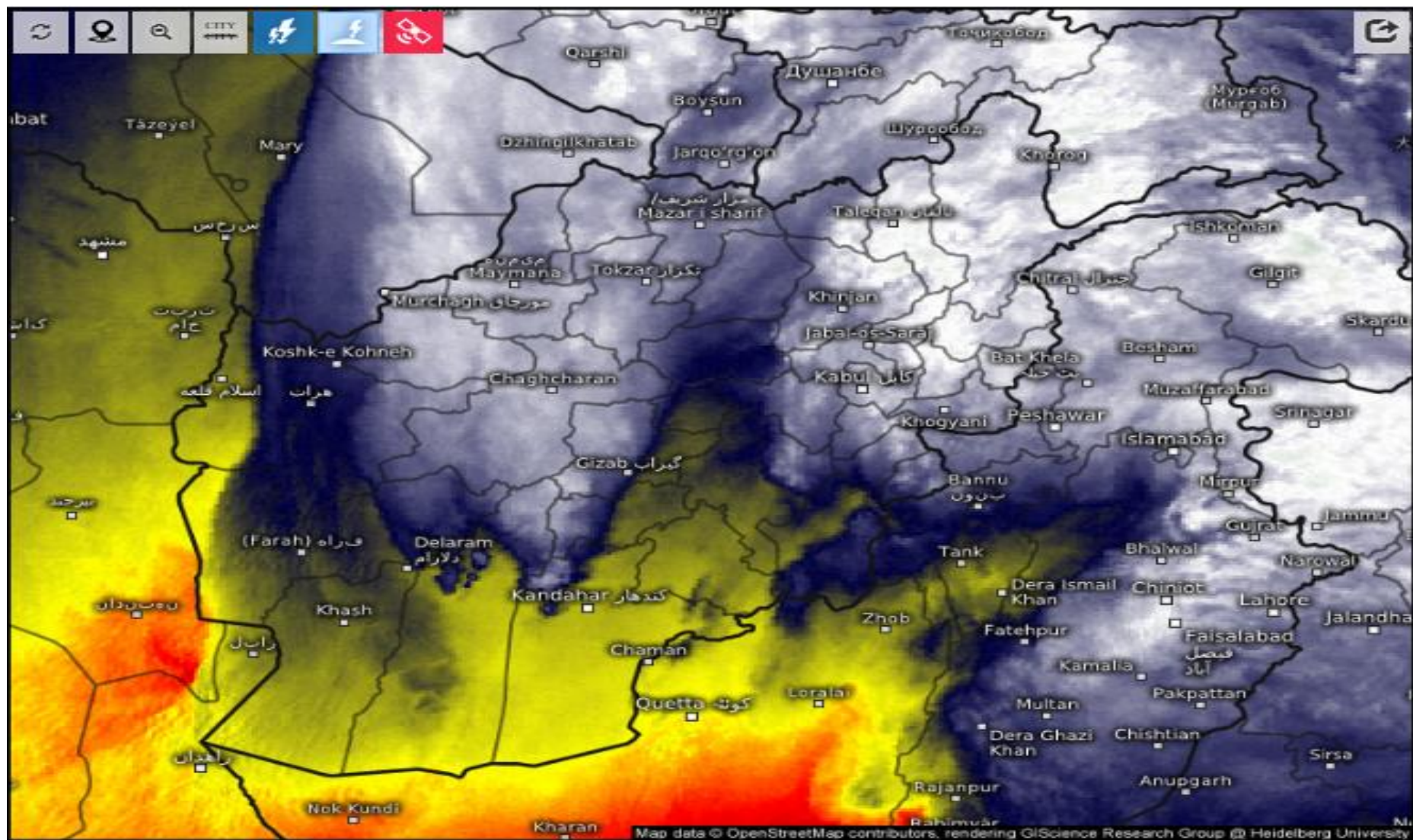
FY-4B AirMass RGB Composite (From WNM)





Satellite Dust 

Wed 12/31/2025, 07:15am GMT+0430



Satellite Water Vapor

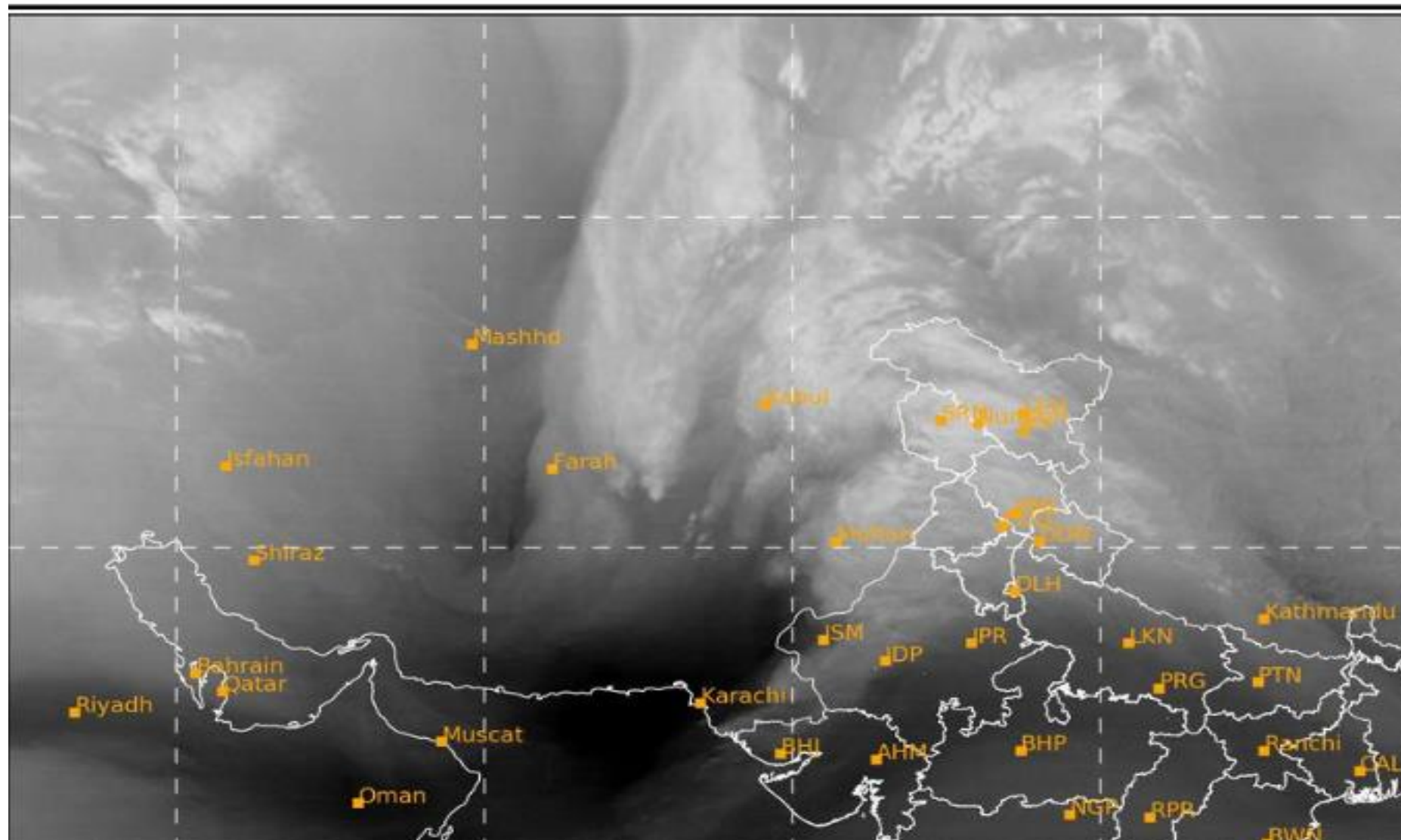
Wed 12/31/2025, 07:15am GMT+0430



© Kopernicus GmbH. Download for private use only.

SAT : INSAT-3DR IMG
IMG_WV 6.8 um
L1C Mercator

31-12-2025/(0345 to 0411) GMT
31-12-2025/(0915 to 0941) IST

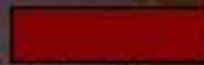


UTC: 2025-12-30 19:30

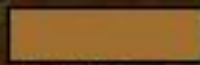
Dust



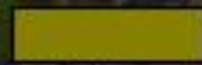
Dust



High-level cloud



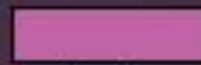
Thick,
mid-level cloud



Thin,
mid-level cloud



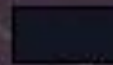
Ocean



Land



Low-level cloud



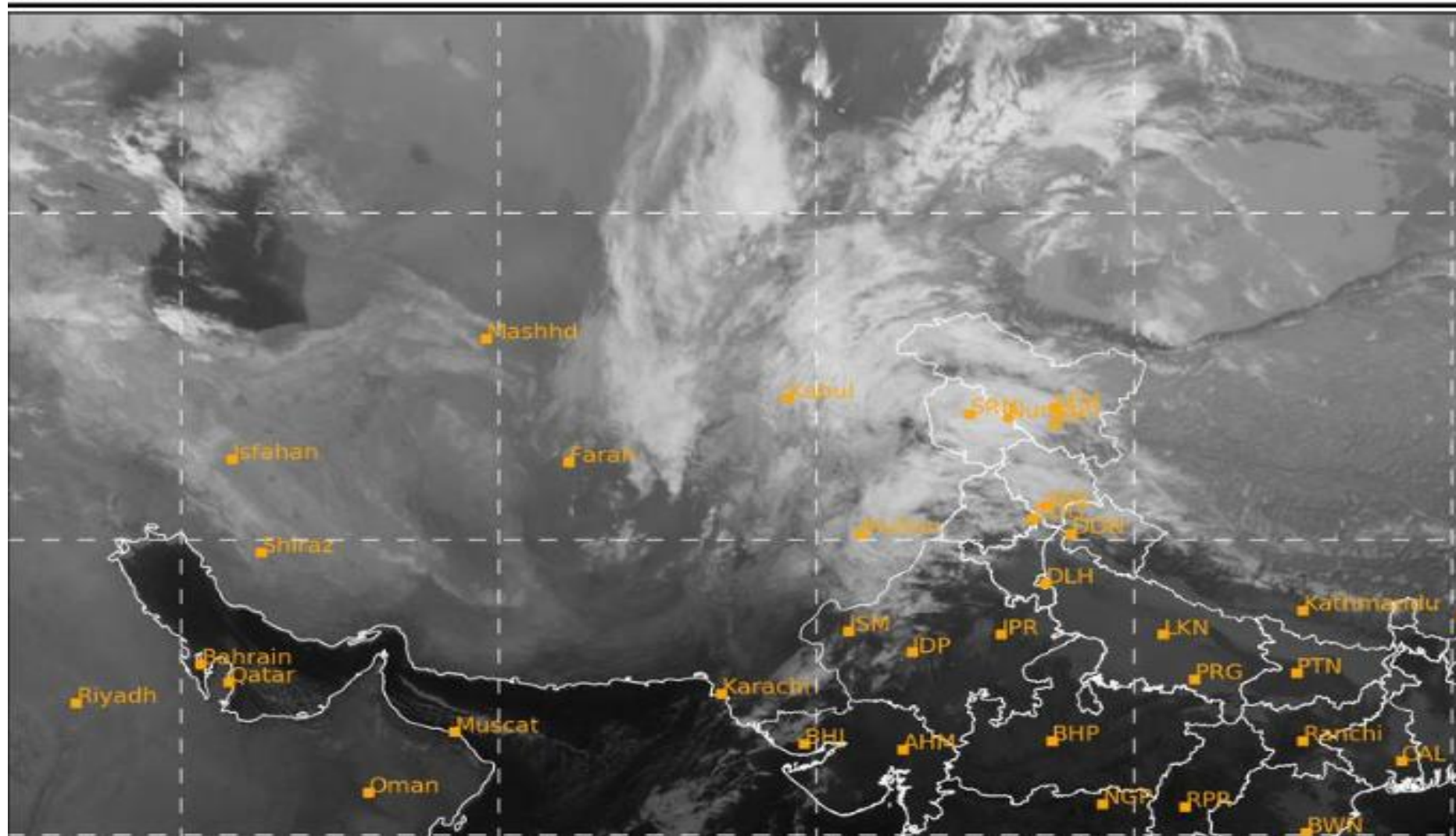
Cirrus

FY-4B Dust RGB Composite (From WMO)



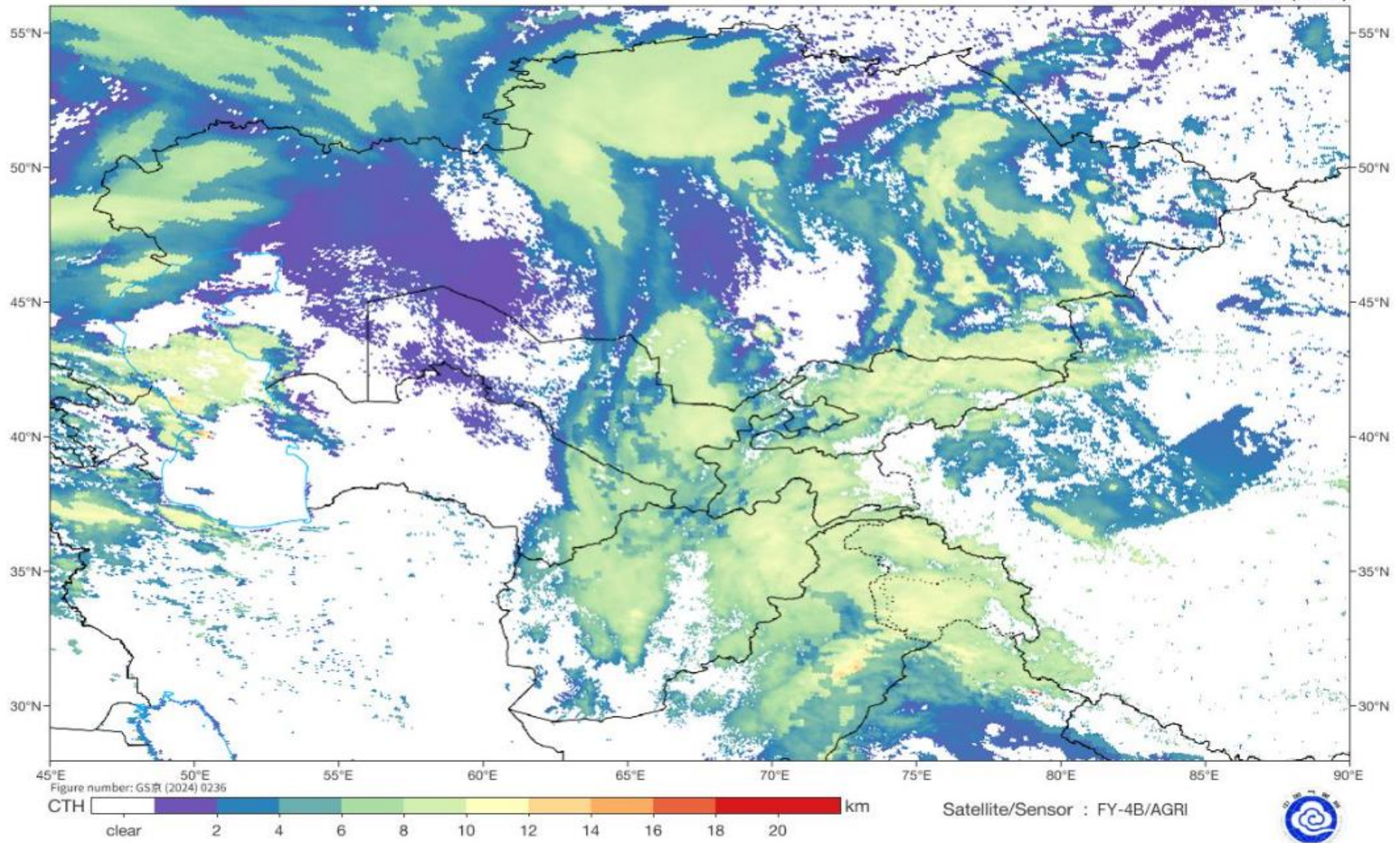
SAT : INSAT-3DR IMG
IMG_TIR1 10.8 um
L1C Mercator

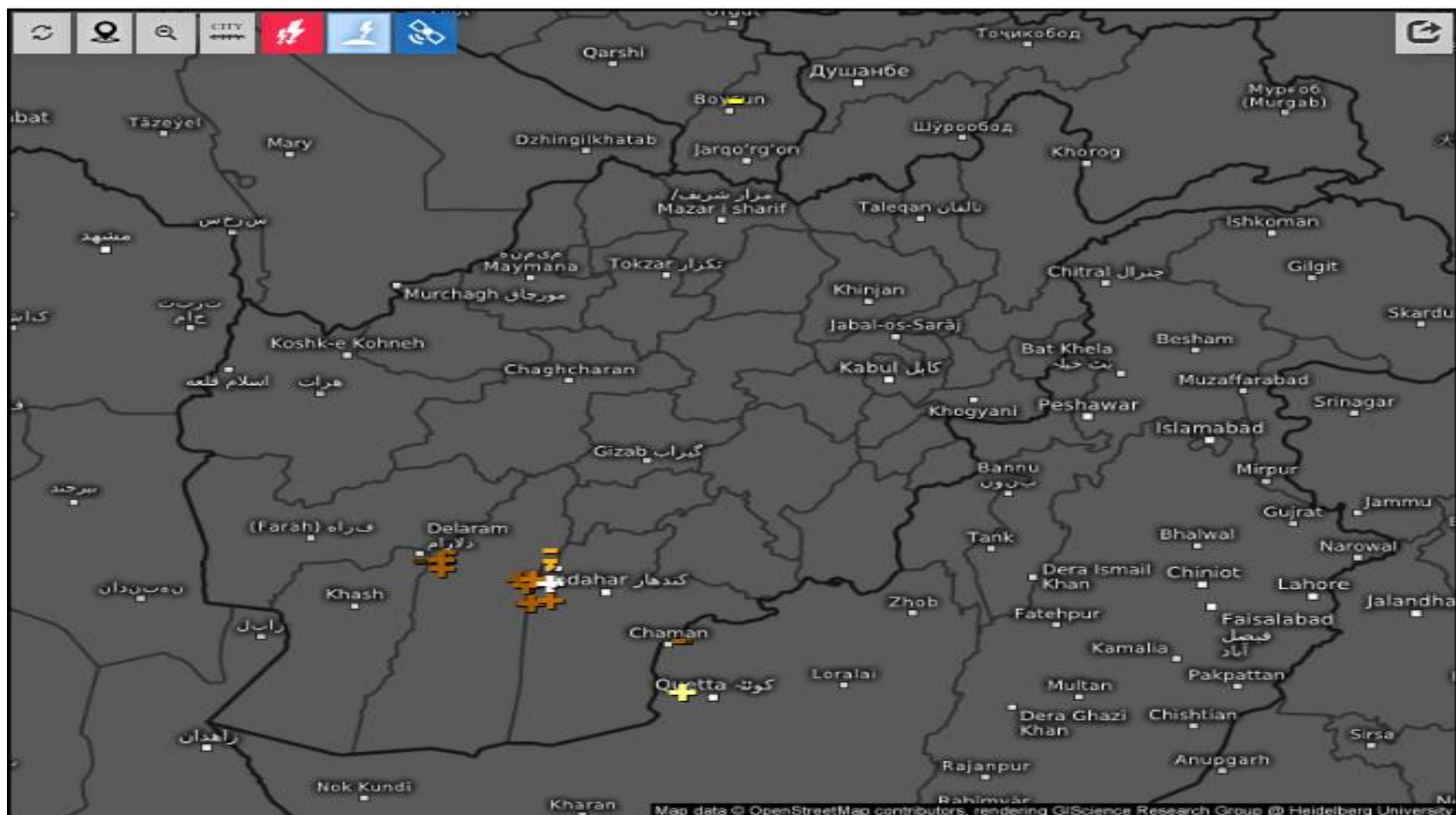
31-12-2025/(0345 to 0411) GMT
31-12-2025/(0915 to 0941) IST



Cloud Top Height

2025-12-31 03:15(UTC)





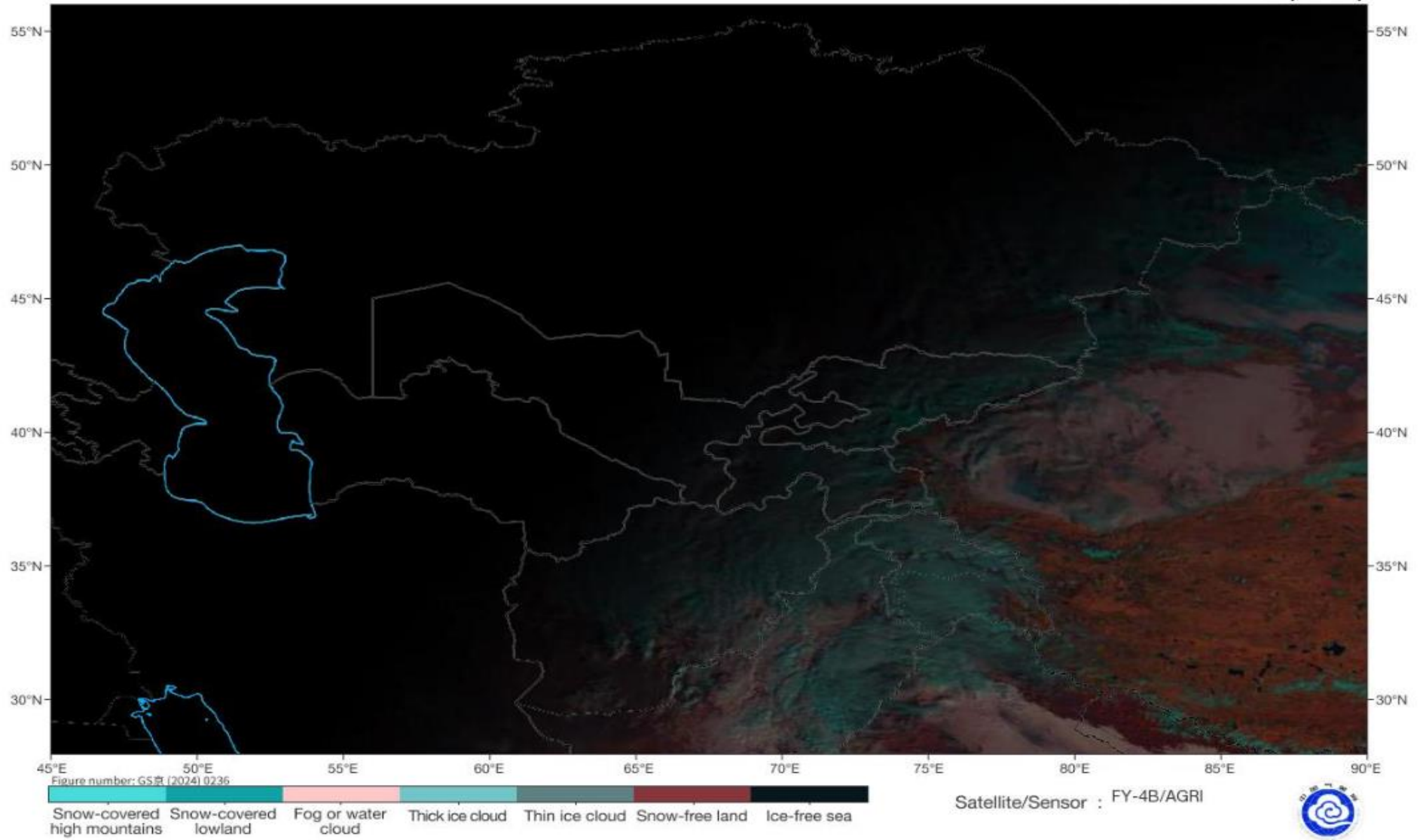
Age of lightning (minutes) 

Wed 12/31/2025, 07:15am GMT+0430



Fog Identification

2025-12-31 03:45(UTC)



Live satellite map, Afghanistan

