



**Islamic Emirate of Afghanistan**  
**Ministry of Transport & Aviation**  
**Afghanistan meteorological Department**  
**Forecast Division**



**Satellite General Management**

Daily reports of Satellite imagery analysis. Date & Time: 23/11/2025, 03:00 UTC

No	Region	Air Mass	Dust Storm	Thunder storm	Cloud	Fog	Water Vapor	Cyclone & Anticyclone	Jetstream	Comments
1	North	✓	X	X	X	X	√ moderate	X	X	
2	South	✓	X	X	X	X	√ dry	X	X	
3	West	✓	✓	X	X	X	√ moderate	X	X	
4	East	✓	X	X	X	X	√ moderate	X	X	
5	central	✓	✓	X	X	X	√ moderate	X	X	
6	Northeast	✓	X	X	X	X	√ moderate	X	X	
7	Southeast	✓	X	X	X	X	√ moderate	X	X	
8	Northwest	✓	X	X	X	X	√ moderate	X	X	
9	Southwest	✓	X	X	X	X	√ dry	X	X	

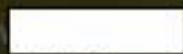
- Details:** According to satellite imagery analysis, the southern, eastern, northeastern, southeastern, southwestern have warm air mass with (low UTH). The northern, western, central, northwestern areas have cold air mass. The western and central areas have dust. The all regions have moderate water vapor with the exception of southern, southwestern areas have dry water vapor.

**Note:** X (Not existing phenomena), √ (exist phenomena)

- Reported by: Esmatullah Mohammadi

UTC : 2025-11-22 19:15

AirMass



Thick,  
high-level cloud



Thick,

mid-level cloud



Thick,

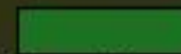
low-level cloud



Jet



Cold Airmass



Warm Airmass  
(high UTH)



Warm Airmass  
(low UTH)

R = WV (6.25)  
G = IR (8.5) - I  
B = WV (6.25)

FY-4B AirMass RGB Composite (From WMO)



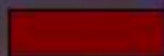


UTC : 2025-11-22 19:30

Dust



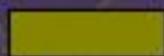
Dust



High-level cloud



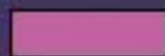
Thick,  
mid-level cloud



Thin,  
mid-level cloud



Ocean



Land



Low-level cloud



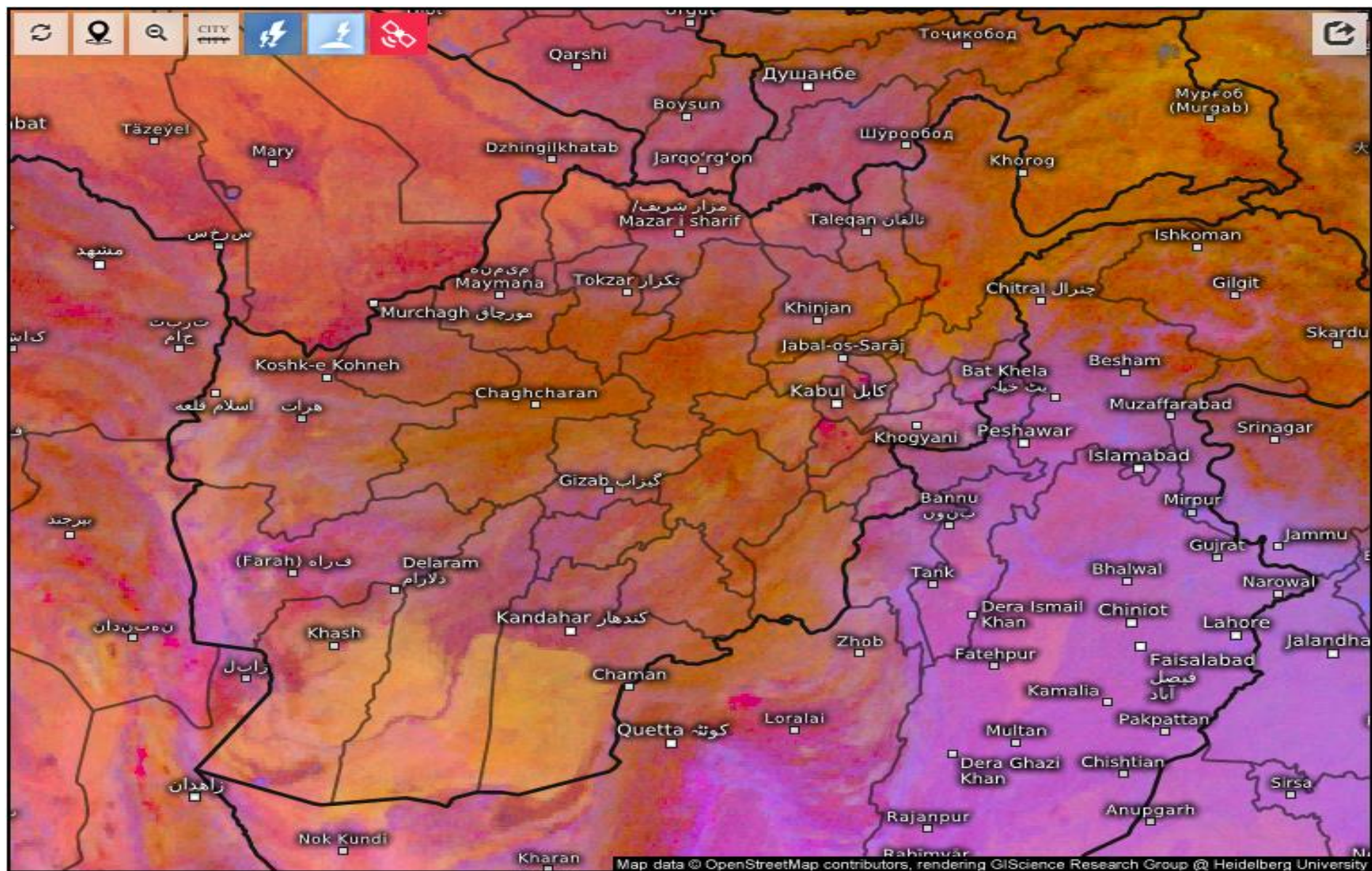
Cirrus

R = IR (12.0) - IR (10.8)  
G = IR (10.8) - IR (6.5)  
B = IR (10.8)

FY-4B Dust RGB Composite (From WMO)



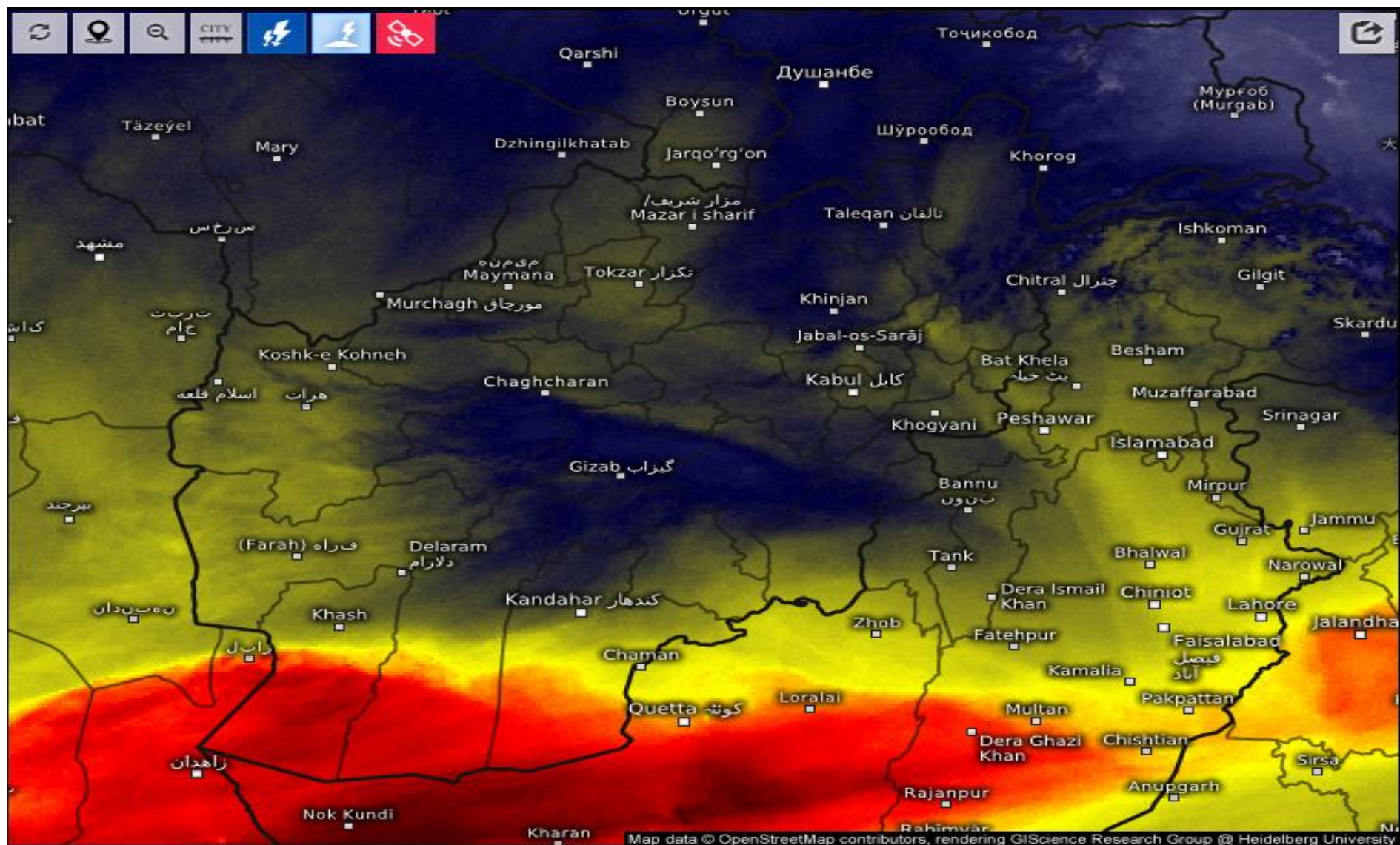




Satellite Dust 

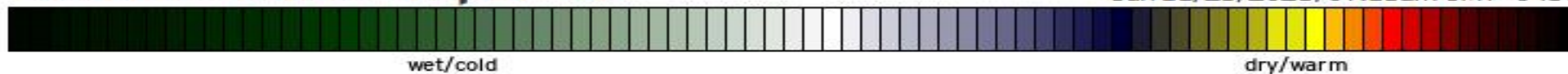
Sun 11/23/2025, 07:15am GMT+0430





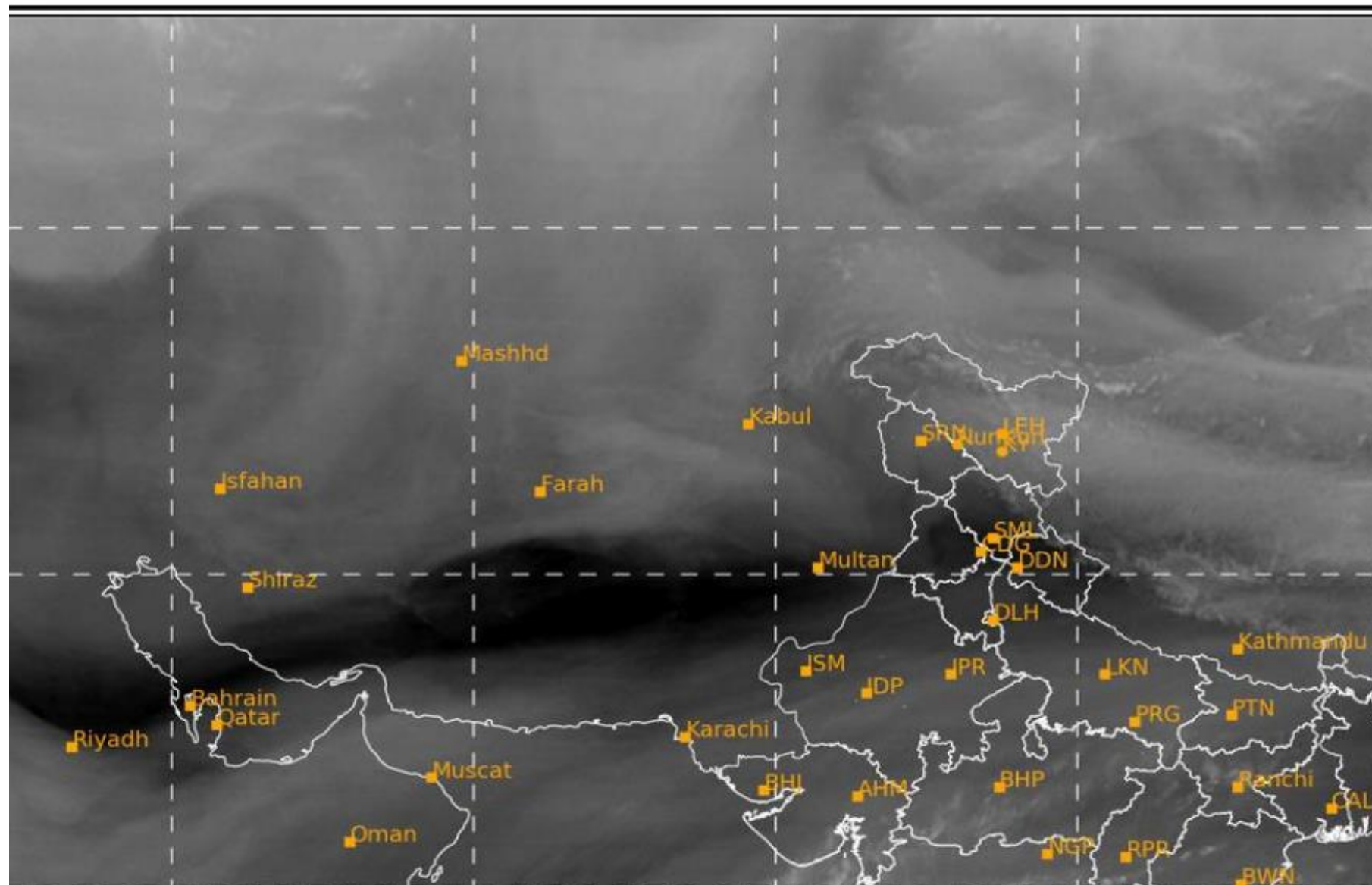
## Satellite Water Vapor

Sun 11/23/2025, 07:15am GMT+0430

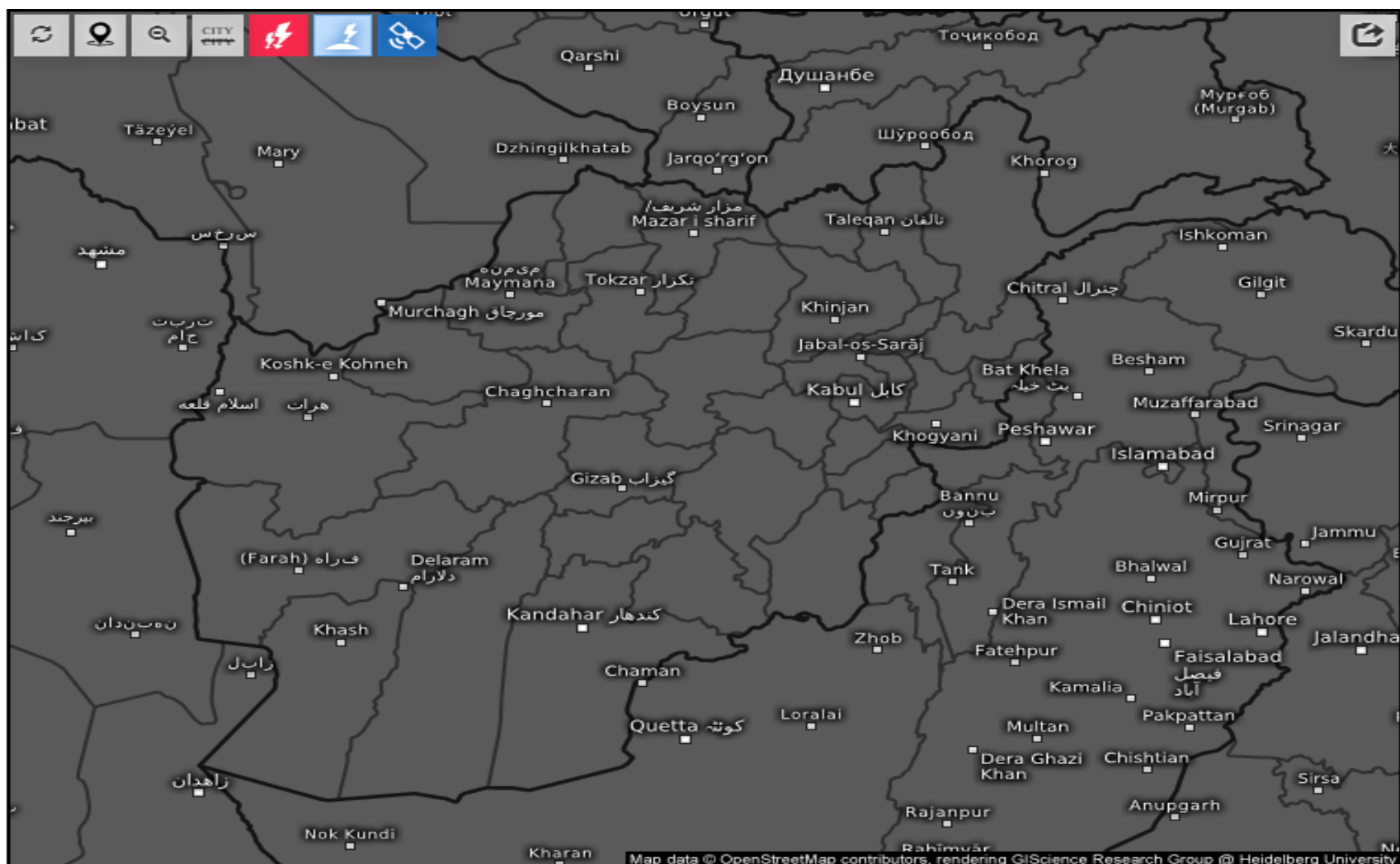


SAT : INSAT-3DR IMG  
IMG\_WV 6.8 um  
L1C Mercator

23-11-2025/(0315 to 0341) GMT  
23-11-2025/(0845 to 0911) IST







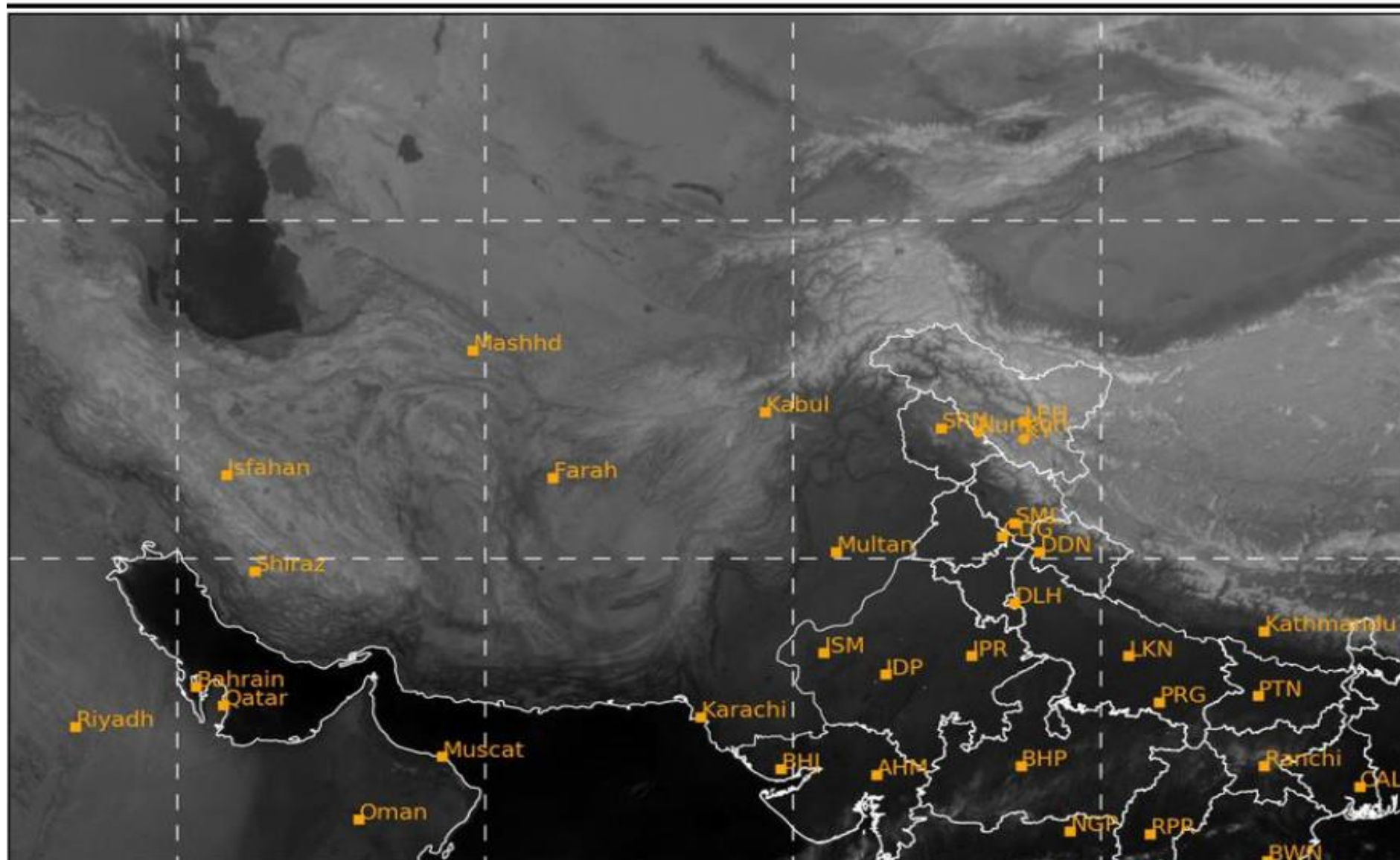
Age of lightning (minutes) 

Sun 11/23/2025, 07:15am GMT+0430



SAT : INSAT-3DR IMG  
IMG\_TIR1 10.8 um  
L1C Mercator

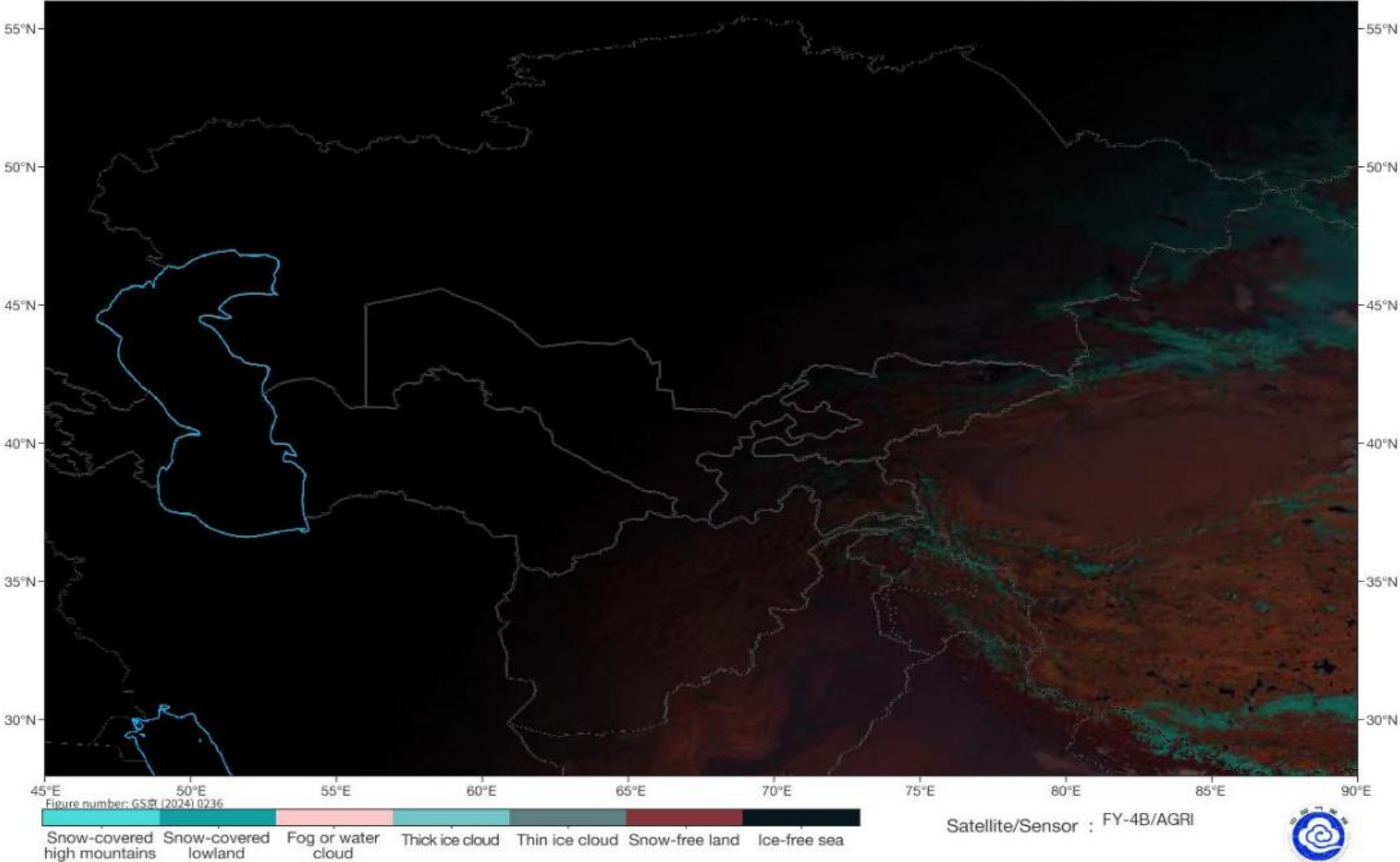
23-11-2025/(0315 to 0341) GMT  
23-11-2025/(0845 to 0911) IST





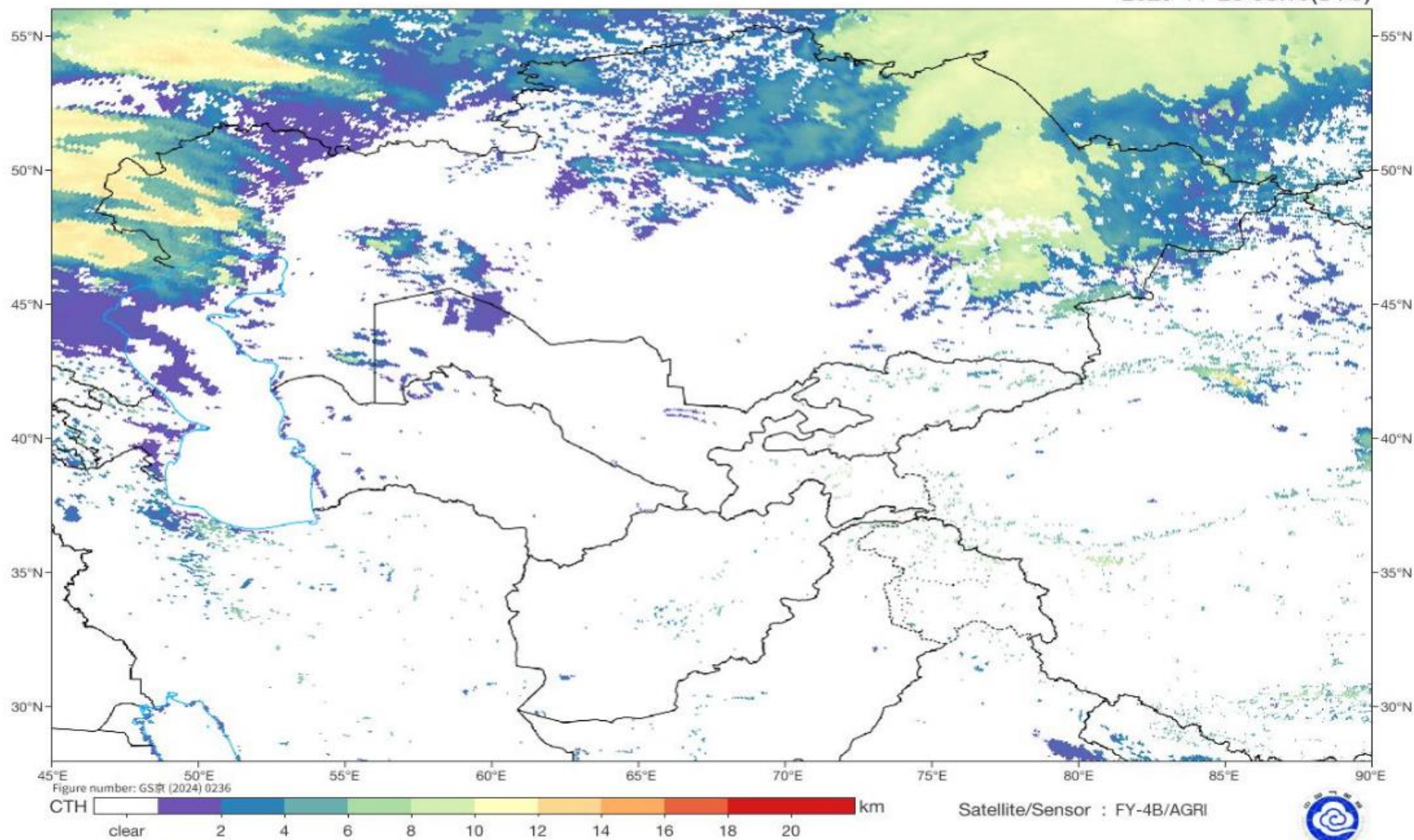
# Fog Identification

2025-11-23 03:15(UTC)



# Cloud Top Height

2025-11-23 03:15(UTC)





## Live satellite map, Afghanistan

