



Islamic Emirate of Afghanistan
Ministry of Transport & Aviation
Afghanistan meteorological Department
Forecast Division
Satellite General Management



Daily reports of Satellite imagery analysis. Date & Time: 17/08/2025, 15:00 UTC

| No | Region | Air Mass | Dust Storm | Thunder storm | Cloud | Fog | Water Vapor | Cyclone & Anticyclone | Jetstream | Comments |
|----|-----------|----------|------------|---------------|-------|-----|-------------|-----------------------|-----------|----------|
| 1 | North | ✓ | ✓ | X | X | X | √ Dry | X | X | |
| 2 | South | ✓ | X | X | X | X | √ weak | X | X | |
| 3 | West | X | ✓ | X | X | X | √ weak | X | X | |
| 4 | East | ✓ | X | ✓ | ✓ | X | √ moderate | X | X | |
| 5 | central | ✓ | ✓ | ✓ | ✓ | X | √ weak | X | X | |
| 6 | Northeast | ✓ | X | X | ✓ | X | √ Dry | X | X | |
| 7 | Southeast | X | X | ✓ | ✓ | X | √ moderate | X | X | |
| 8 | Northwest | X | ✓ | X | X | X | √ Dry | X | X | |
| 9 | Southwest | ✓ | ✓ | X | X | X | √ moderate | X | X | |

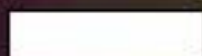
- Details:** According to satellite imagery analysis, the northern, eastern, central, northeastern, areas have warm air mass (Low UTH). The southern and southwestern areas have cold air mass. The northern, western, central, northwestern and southwestern areas have dust. The eastern, central and southeastern areas have thunderstorm. The eastern, central, northeastern, southeastern areas have cloudy sky. The northern, northeastern and northwestern areas have dry water vapor the southern, western; central areas have weak water vapor the eastern, southeastern and southwestern areas are moderate.

Note: X (Not existing phenomena), √ (exist phenomena)

- Reported by: Esmatullah Mohammadi

UTC : 2025-08-17 05:15

AirMass



Thick,
high-level cloud



Thick,

mid-level cloud

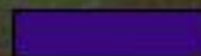


Thick,

low-level cloud



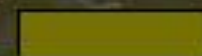
Jet



Cold Airmass



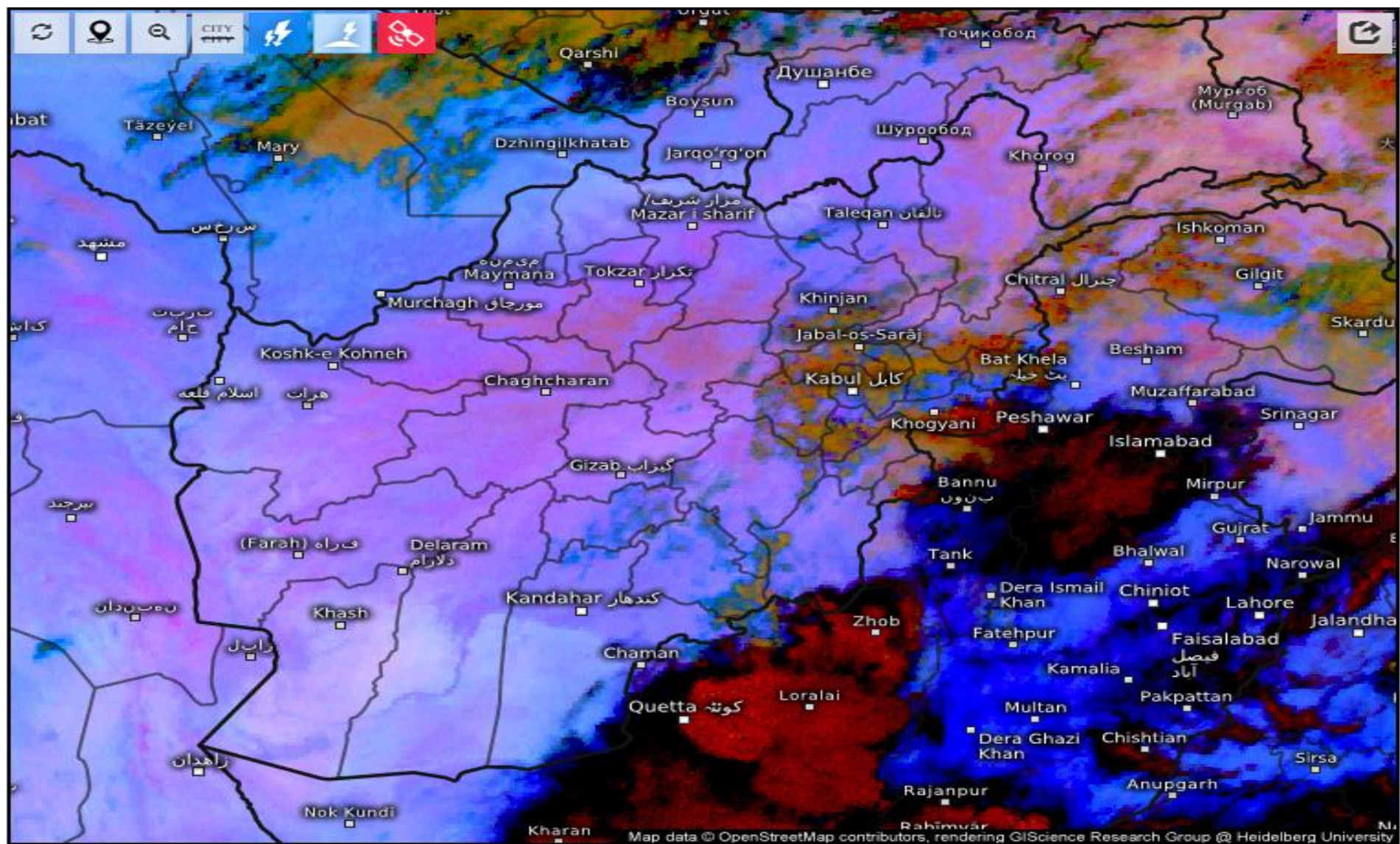
Warm Airmass
(high UTH)



Warm Airmass
(low UTH)

FY-4B AirMass RGB Composite (From WMO)





Satellite Dust 

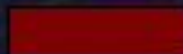
Sun 08/17/2025, 07:00pm GMT+0430

UTC : 2025-08-17 05:15

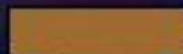
Dust



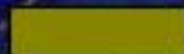
Dust



High-level cloud



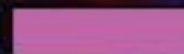
Thick,
mid-level cloud



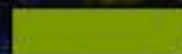
Thin,
mid-level cloud



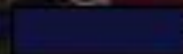
Ocean



Land



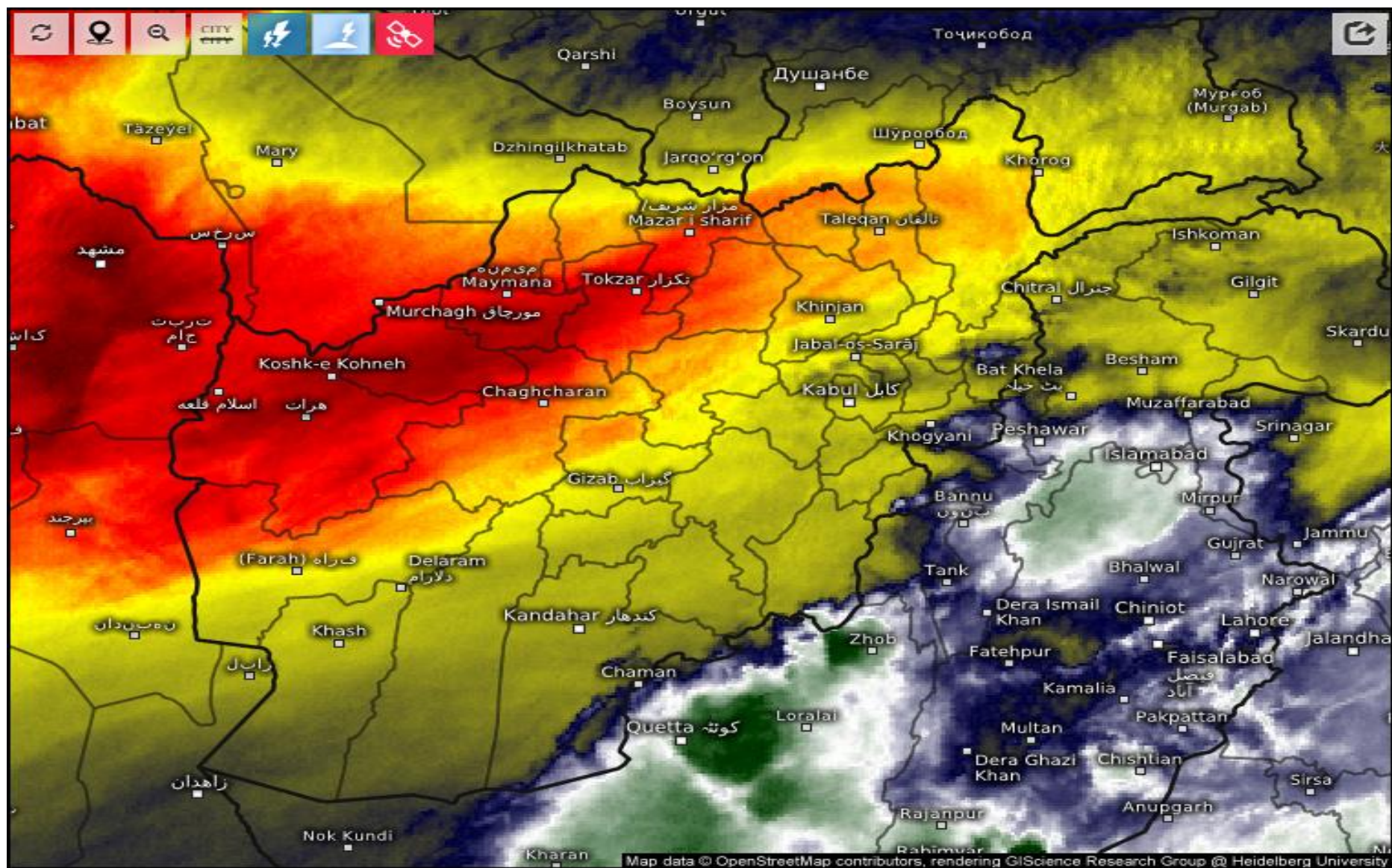
Low-level cloud



Cirrus

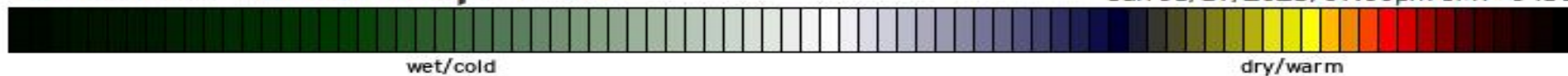
FY-4B Dust RGB Composite (From WMO)





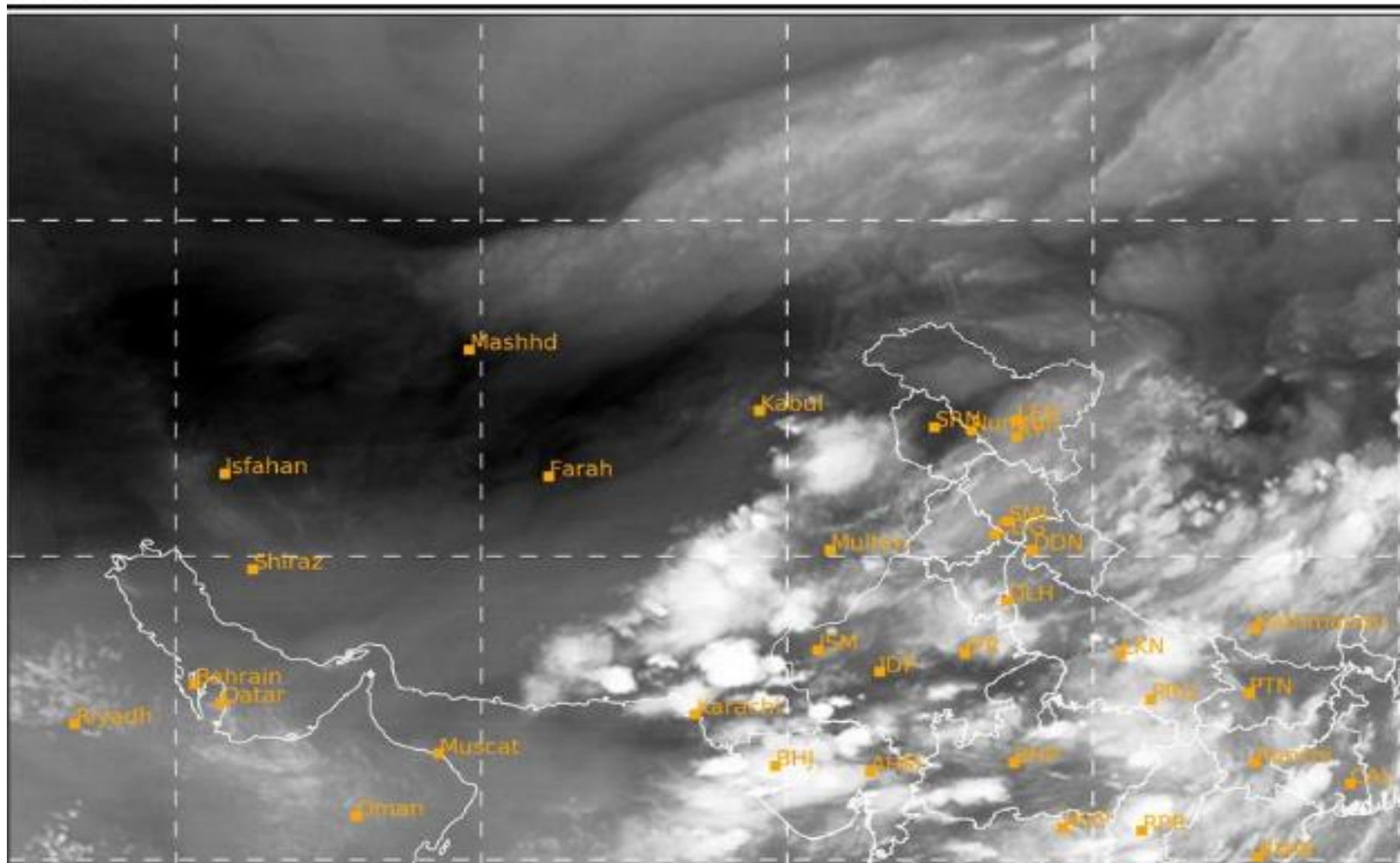
Satellite Water Vapor

Sun 08/17/2025, 07:00pm GMT+0430



SAT : INSAT-3DR IMG
IMG_WV 6.8 um
L1C Mercator

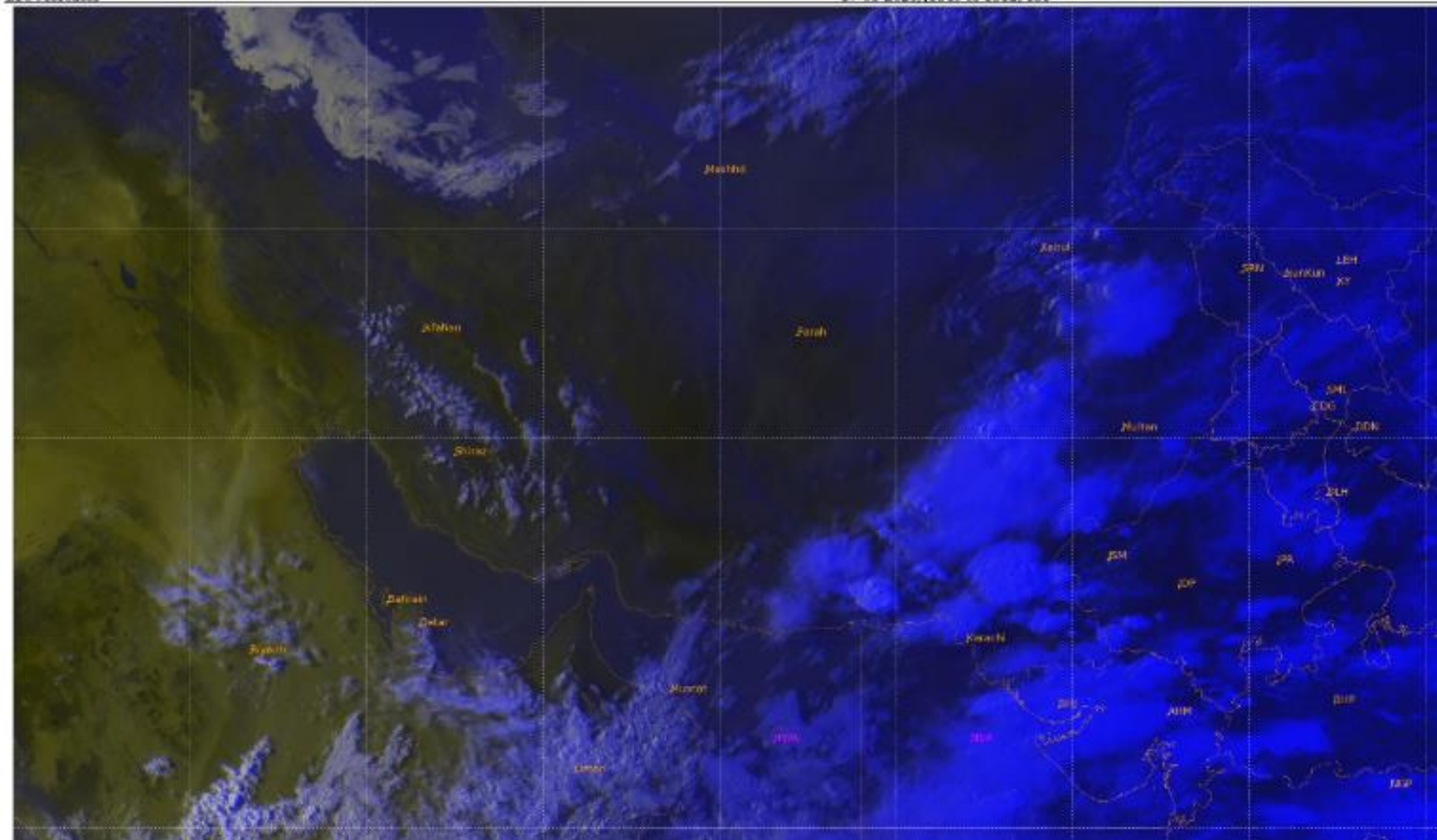
17-08-2025/(1315 to 1342) GMT
17-08-2025/(1845 to 1912) IST



SAT : INSAT-3DR IMG
 IMG_VIS 0.65 um(R), IMG_VIS 0.65 um(G), IMG_TIR1 10.8 um(B)
 L1C Mercator

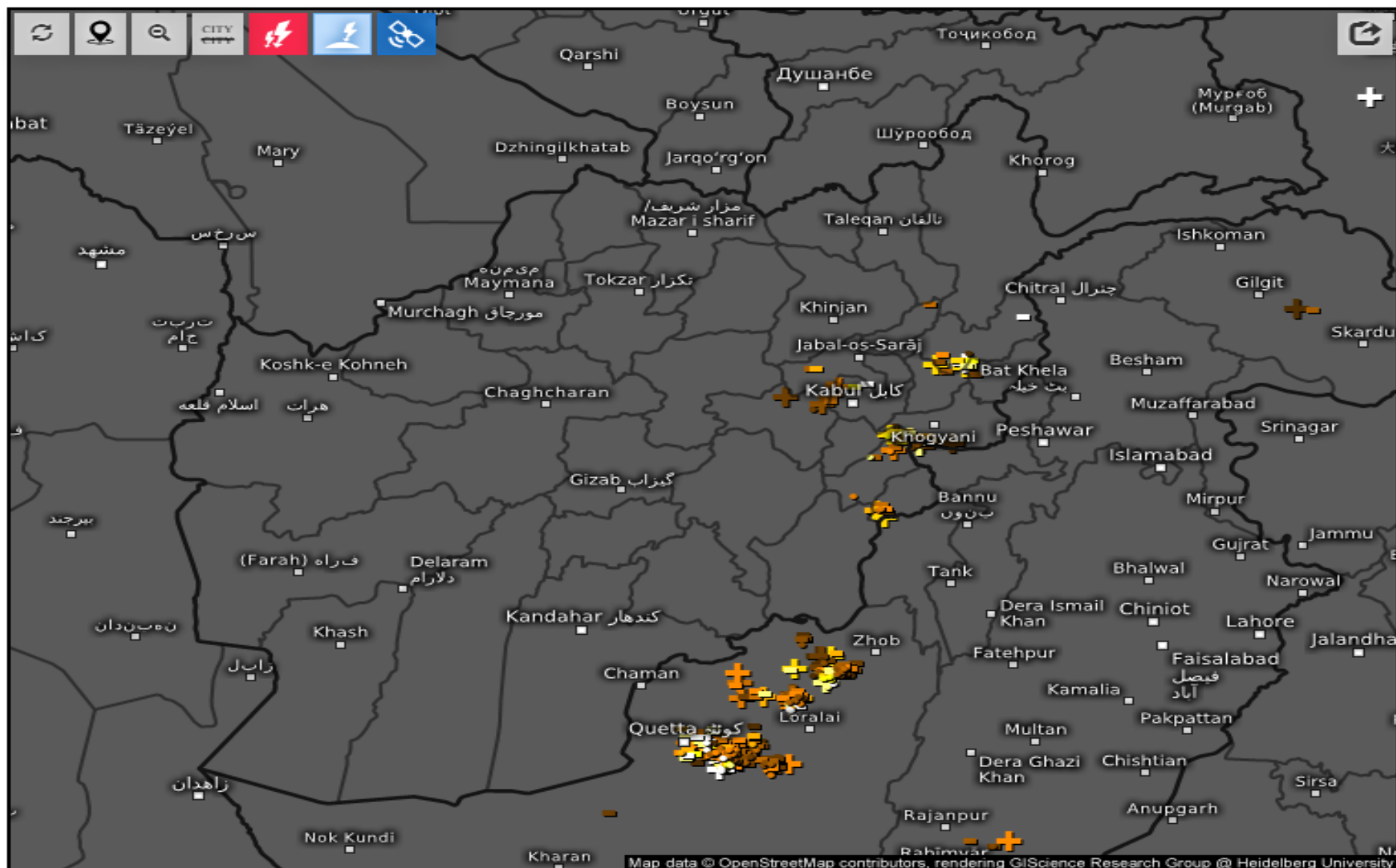
17-08-2025/(1315 to 1342) GMT

17-08-2025/1845 to 1912) 18F



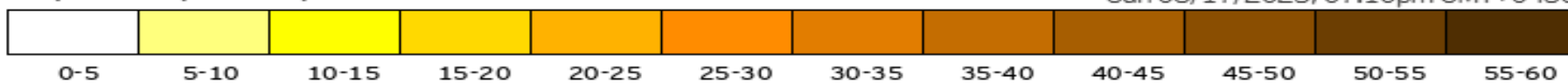
| | | | |
|---|--------|---------|------|
| 0 | 100% 0 | 60% 203 | 323K |
|---|--------|---------|------|

Fog Low Clouds Mid Orographic Cloud CB Snow Dust



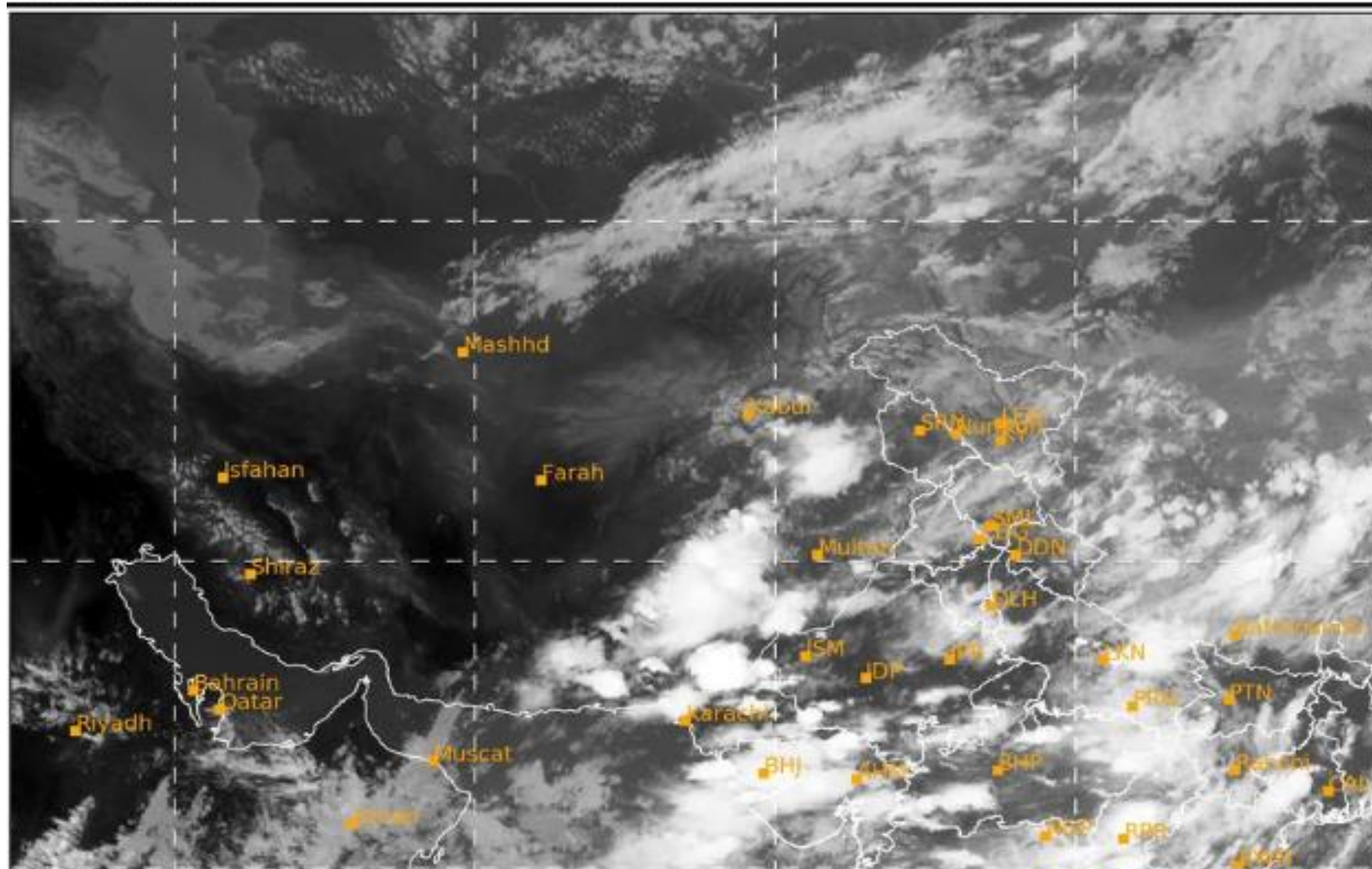
Age of lightning (minutes) 

Sun 08/17/2025, 07:10pm GMT+0430



SAT : INSAT-3DR IMG
IMG_TIR1 10.8 um
L1C Mercator

17-08-2025/(1315 to 1342) GMT
17-08-2025/(1845 to 1912) IST



Live satellite map, Afghanistan



Cloud Top Height

2025-08-17 14:15(UTC)

