



Islamic Emirate of Afghanistan
Ministry of Transport & Aviation
Afghanistan meteorological Department
Forecast Division
Satellite General Management



Daily reports of Satellite imagery analysis. Date & Time: 16/08/2025, 03:00 UTC

No	Region	Air Mass	Dust Storm	Thunder storm	Cloud	Fog	Water Vapor	Cyclone & Anticyclone	Jetstream	Comments
1	North	✓	✓	X	X	X	✓ Dry	X	X	
2	South	✓	✓	X	X	X	✓ Weak	X	X	
3	West	✓	✓	X	X	X	✓ Weak	X	X	
4	East	✓	X	X	X	X	✓ Dry	X	X	
5	central	✓	✓	X	X	X	✓ Weak	X	X	
6	Northeast	✓	X	X	X	X	✓ Dry	X	X	
7	Southeast	✓	X	X	✓	X	✓ Weak	X	X	
8	Northwest	✓	✓	X	X	X	✓ Dry	X	X	
9	Southwest	✓	X	X	X	X	✓ Moderate	X	X	

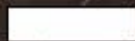
Details: According to satellite imagery analysis, the northern, southern, western, eastern, central, northeastern, southeastern, and northwestern areas have warm air mass with low UTH. The southwestern areas have cold air mass. The northern, southern, western, central, and northwestern areas have dust storm. Some parts of southeastern areas have partly cloudy sky. The northern, eastern, northeastern, and northwestern areas are dry. The southern, western, central, and southeastern areas have weak water vapor. The southwestern areas have moderate water vapor.

Note: X (Not existing phenomena), ✓ (exist phenomena)

- Reported by: Sayed Taher Atlas

UTC : 2025-08-16 01:00

AirMass



Thick,
high-level cloud



Thick,
mid-level cloud



Thick,
low-level cloud



Jet



Cold Airmass



Warm Airmass
(high UTH)



Warm Airmass
(low UTH)

R = WV (6.25) - WV (7.1)

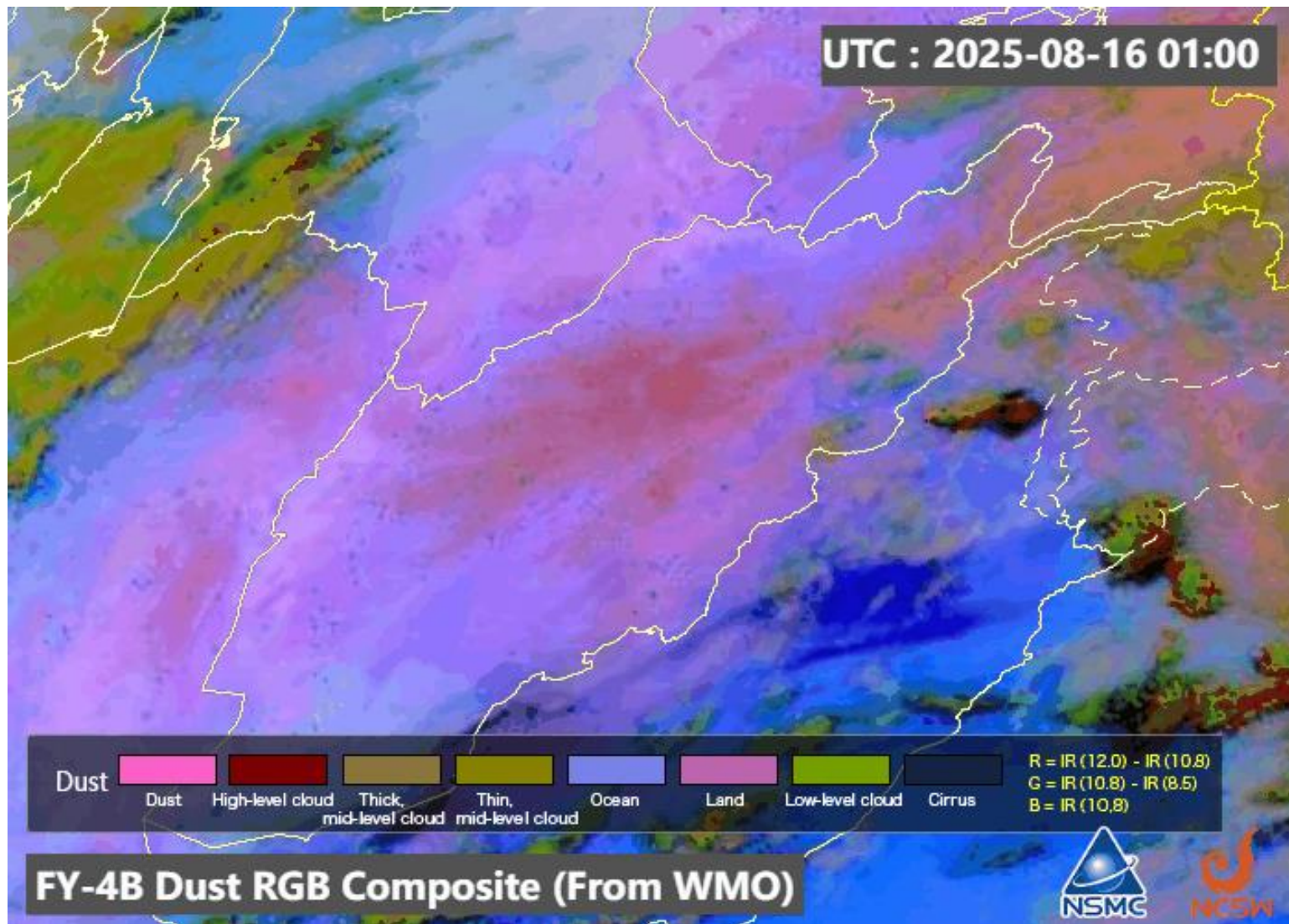
G = IR (8.5) - IR (10.8)

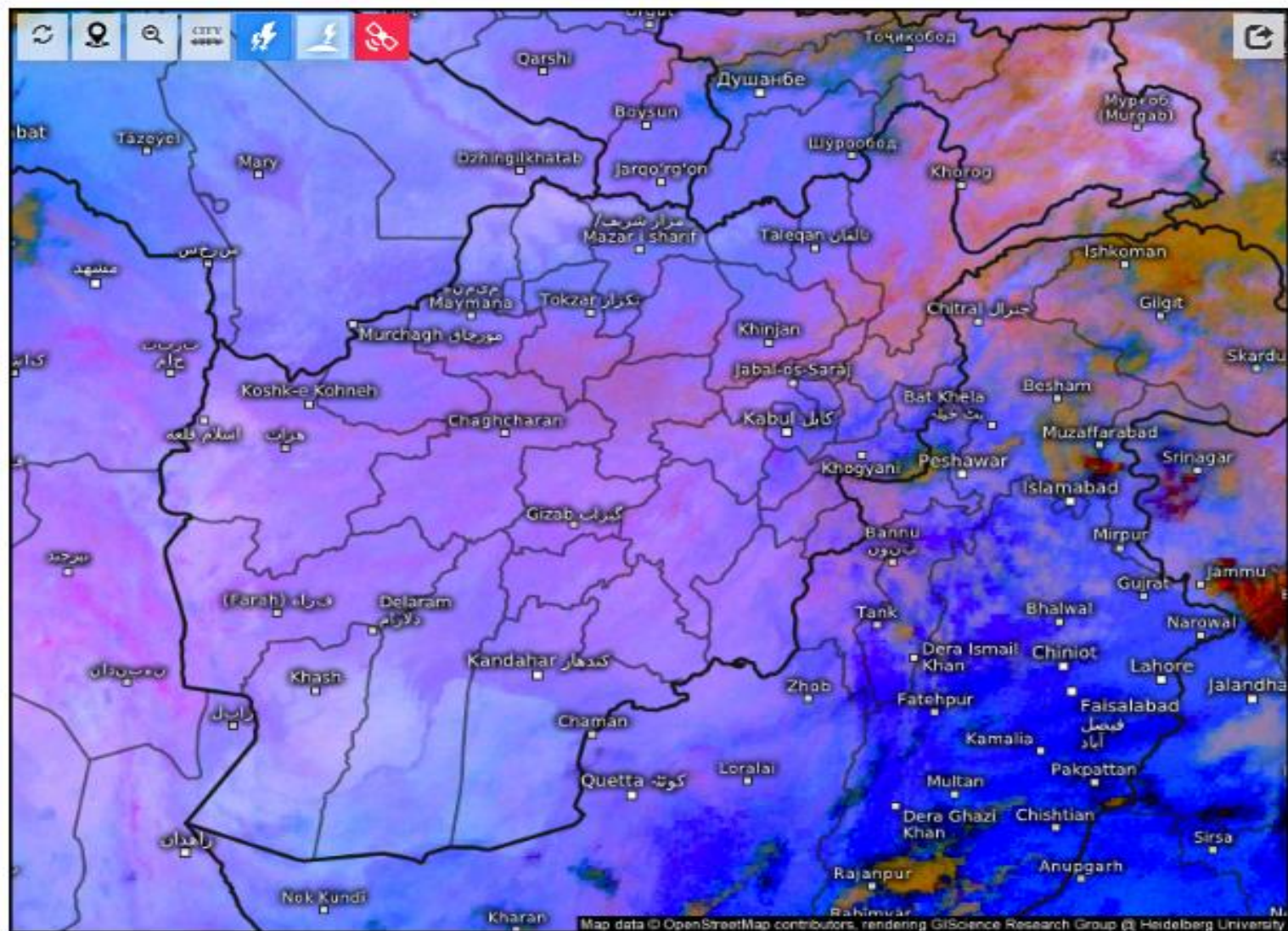
B = WV (6.25)

FY-4B AirMass RGB Composite (From WMO)



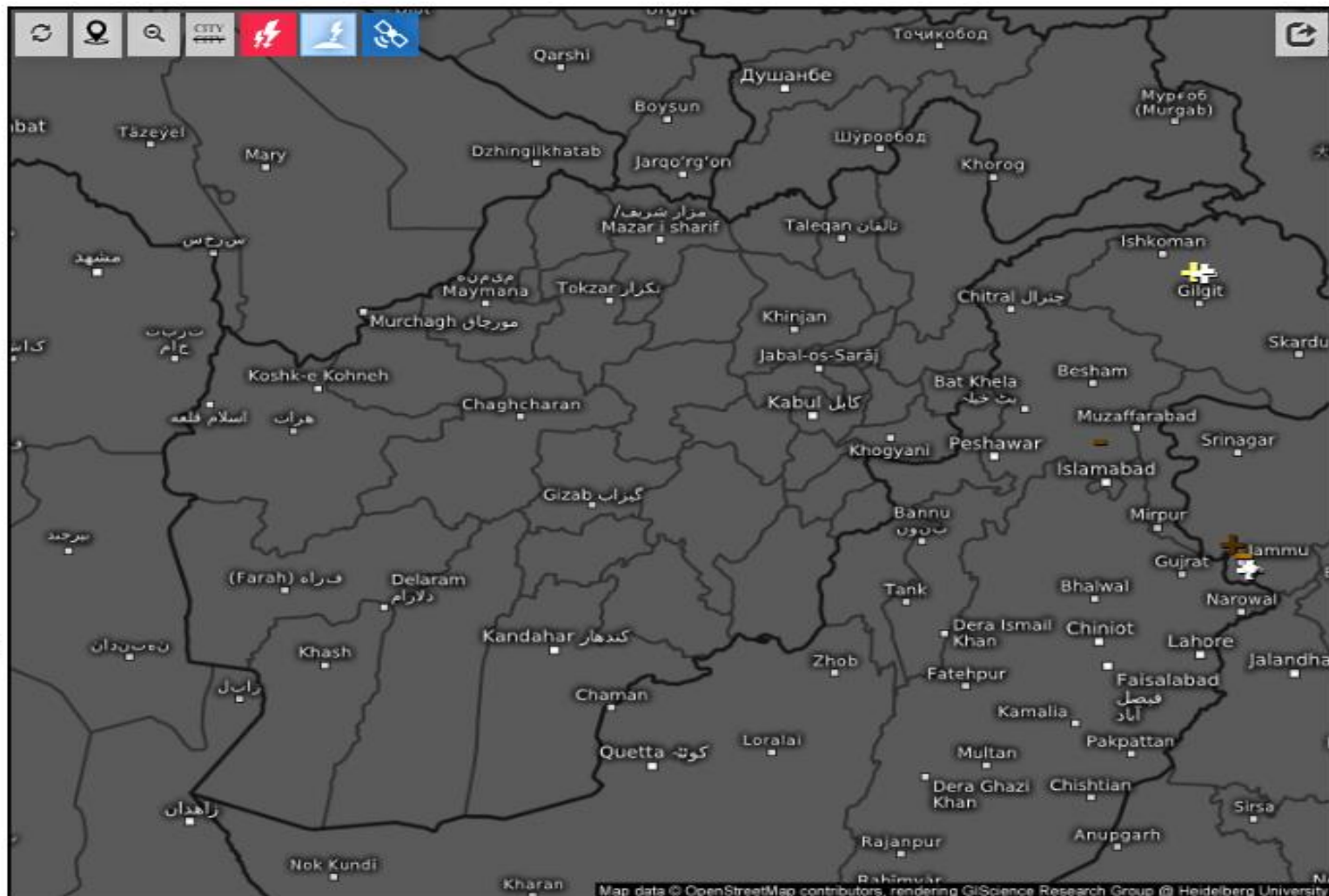
UTC : 2025-08-16 01:00





Satellite Dust 

Sat 08/16/2025, 07:30am GMT+0430

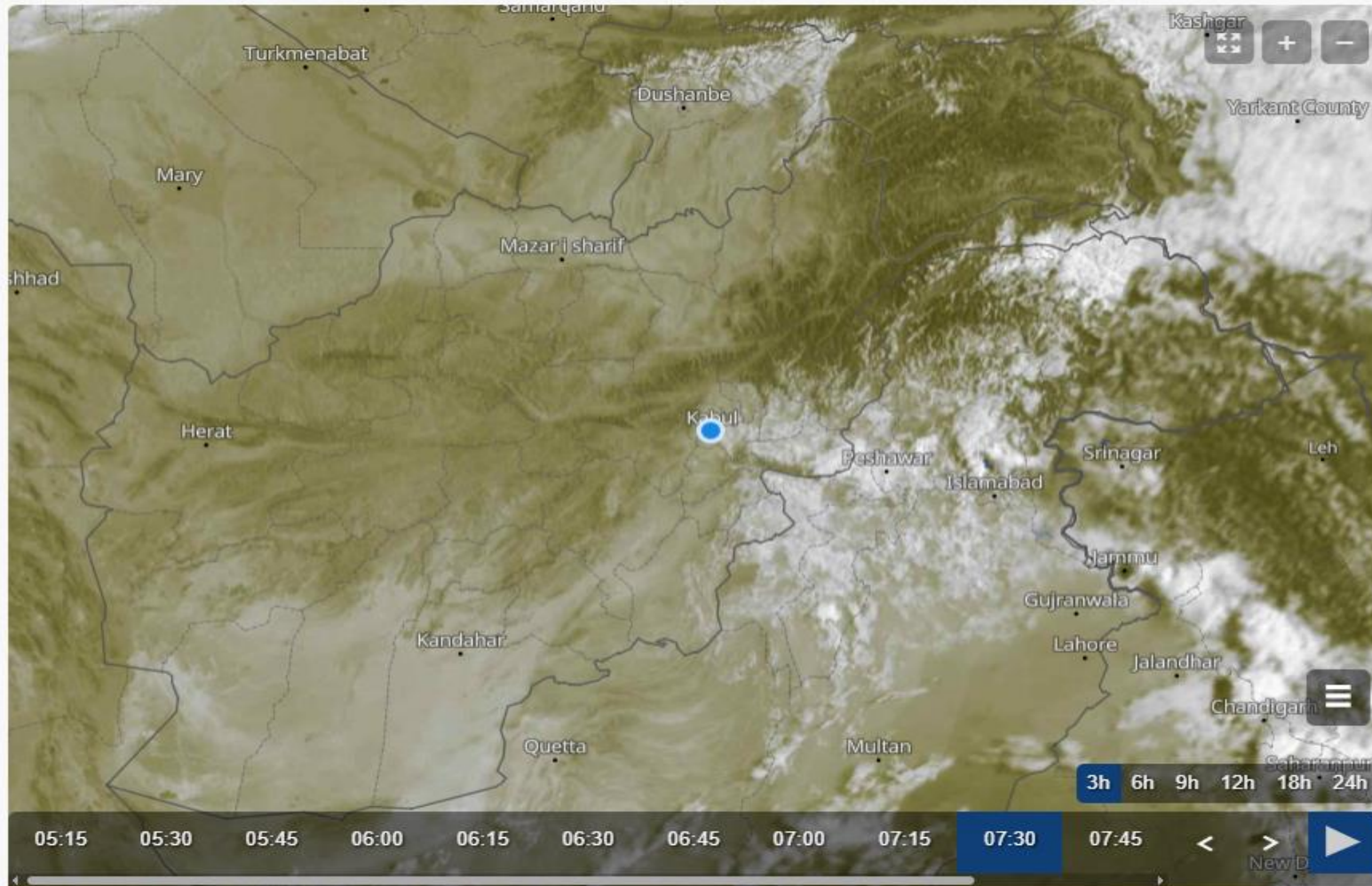


Age of lightning (minutes) 

Sat 08/16/2025, 07:30am GMT+0430

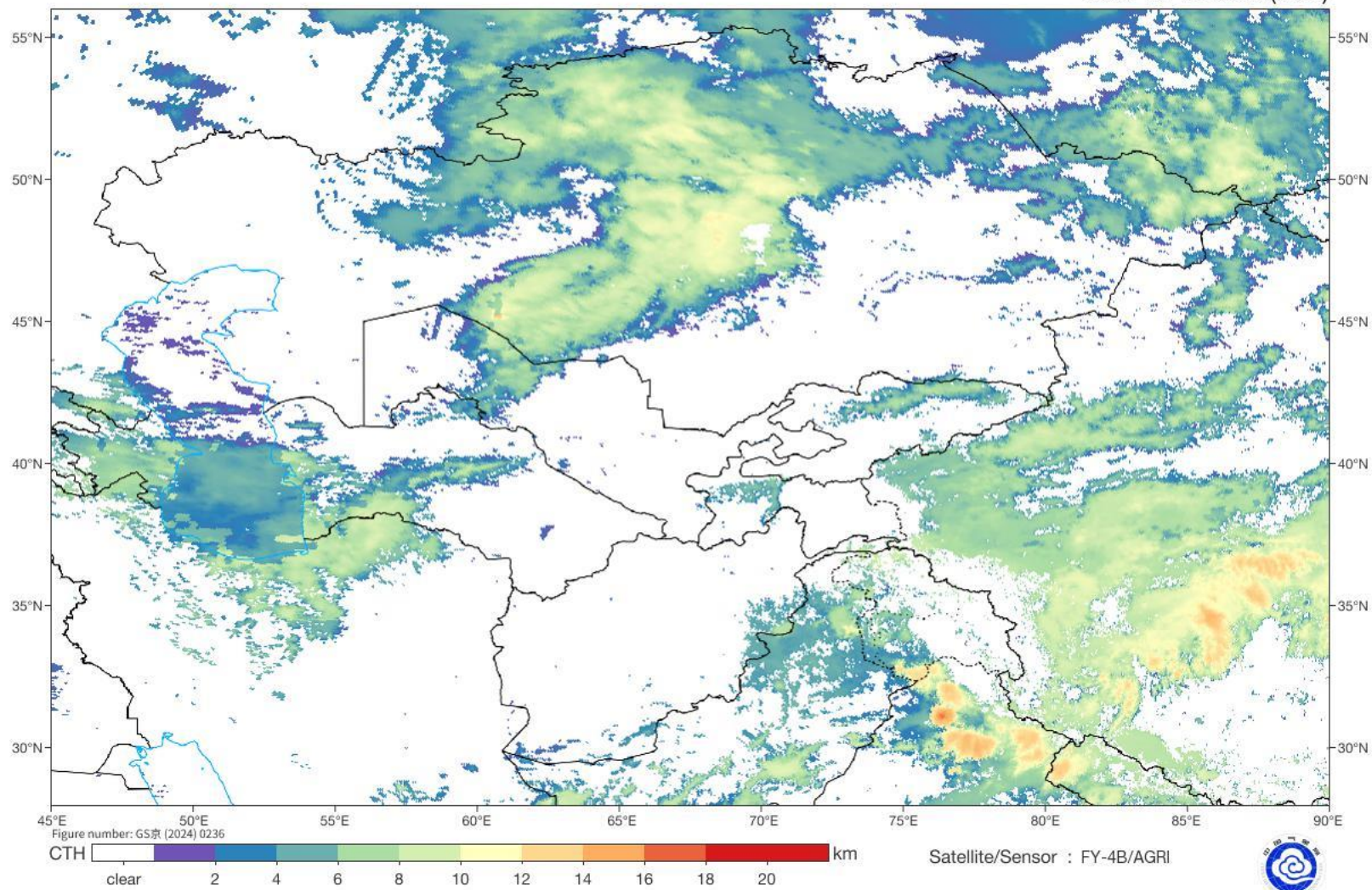


Live satellite map, Afghanistan



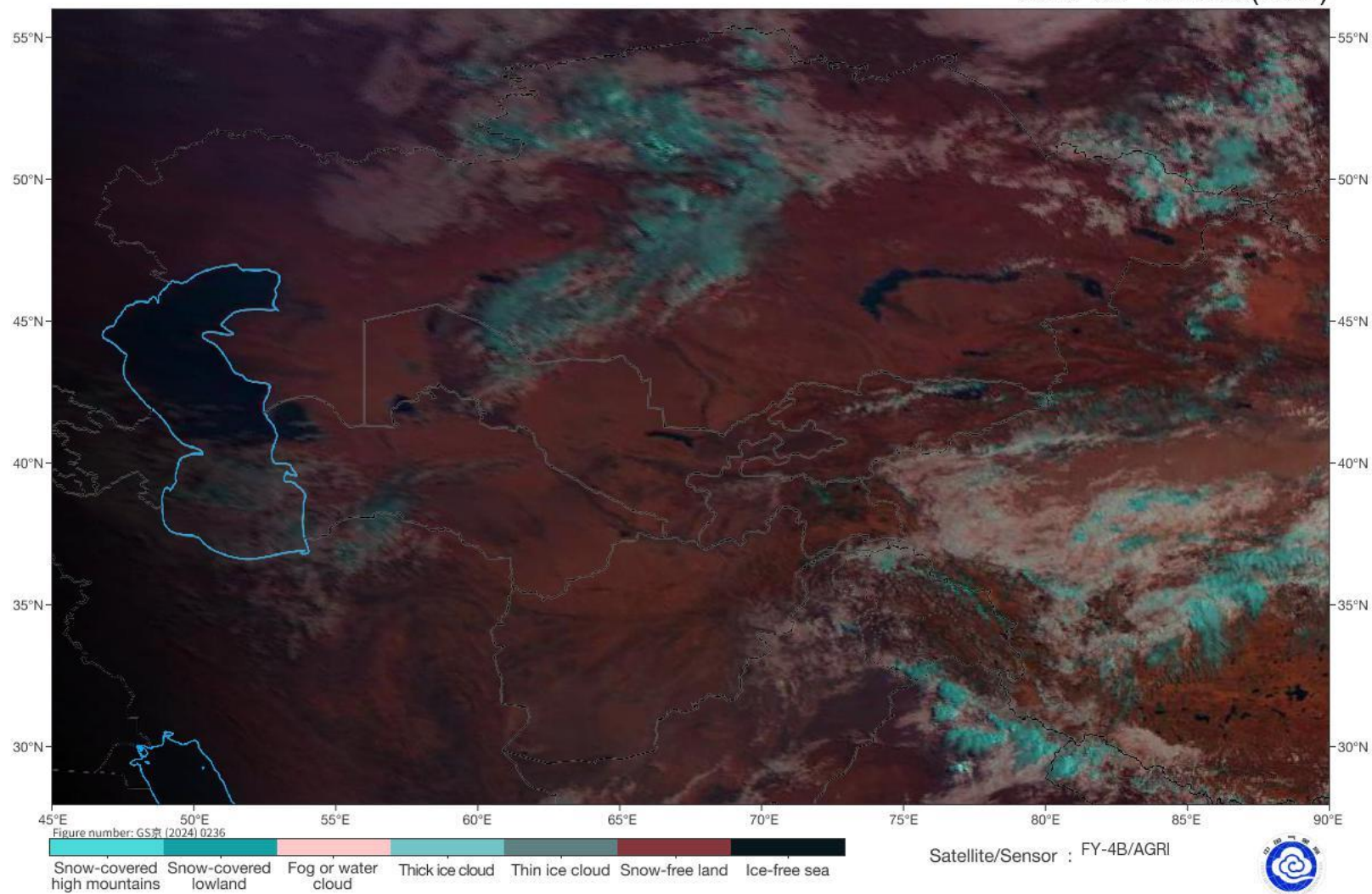
Cloud Top Height

2025-08-16 03:00(UTC)



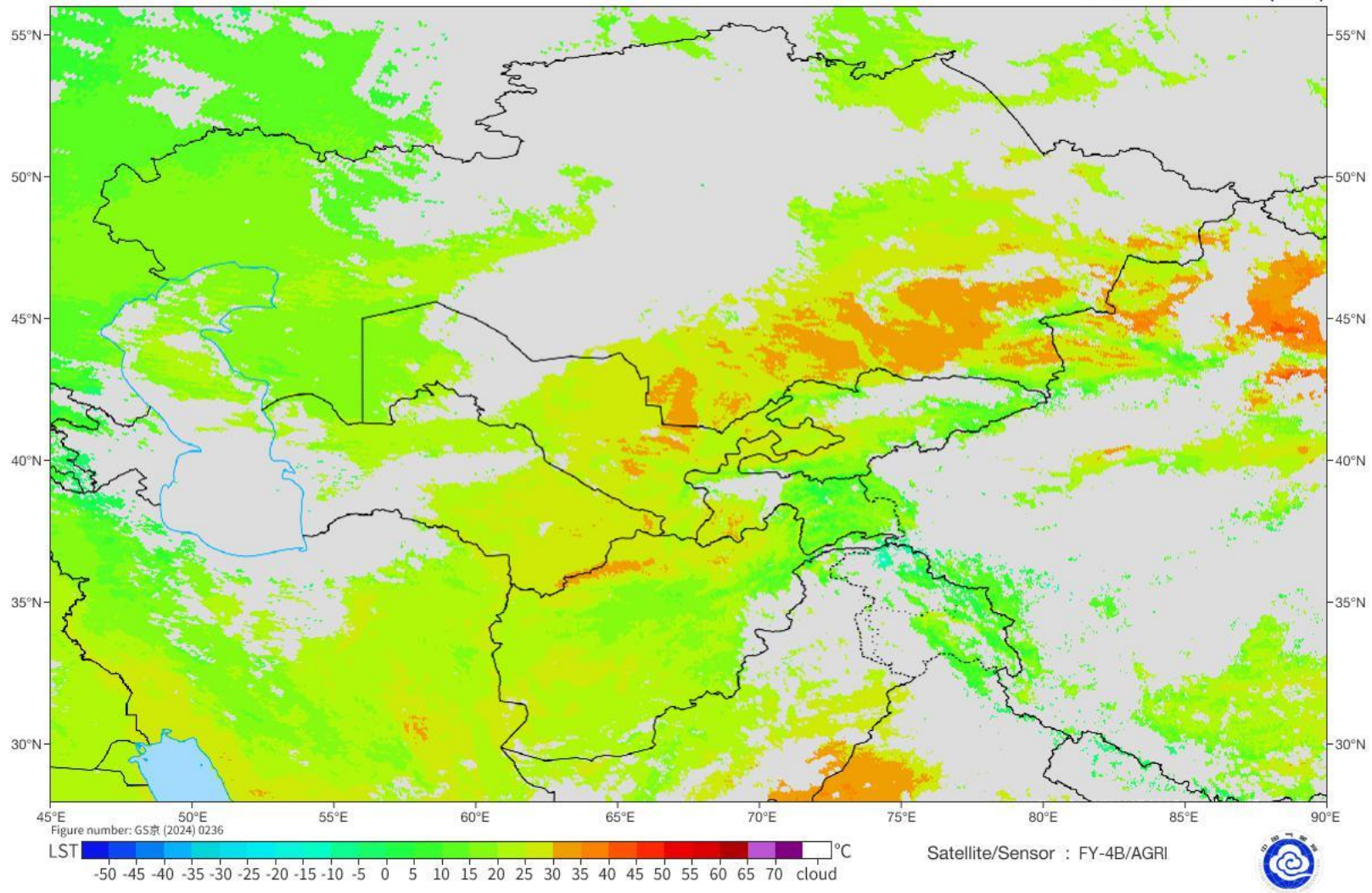
Fog Identification

2025-08-16 03:00(UTC)



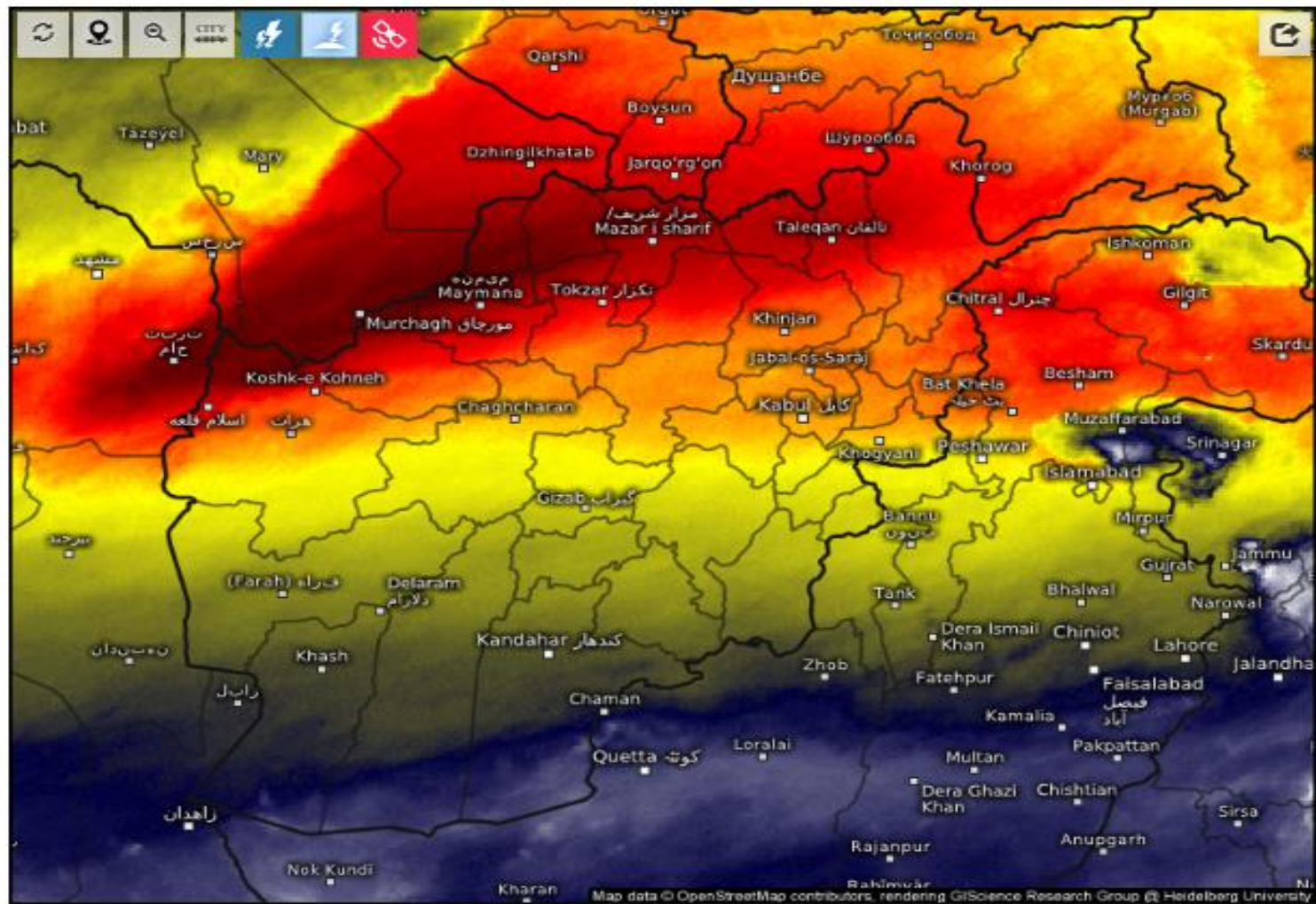
Land Surface Temperature

2025-08-16 03:00(UTC)



A grayscale satellite image of the Middle East and surrounding regions, overlaid with a grid of latitude and longitude lines. Numerous cities are marked with yellow dots and labeled with their names in orange text. The image shows cloud patterns over the landmasses.

A grayscale satellite image of the Middle East and surrounding regions, overlaid with a grid of latitude and longitude lines. Numerous cities are marked with yellow dots and labeled with their names in orange text. The image shows cloud patterns over the landmasses.



Satellite Water Vapor

Sat 08/16/2025, 07:30am GMT+0430

