



**Islamic Emirate of Afghanistan**  
**Ministry of Transport & Aviation**  
**Afghanistan meteorological Department**  
**Forecast Division**  
**Satellite General Management**



Daily reports of Satellite imagery analysis. Date & Time: 19/05/2025, 03:00 UTC, Number of reports: 986

No	Region	Air Mass	Dust Storm	Thunder storm	Cloud	Fog	Water Vapor	Cyclone & Anticyclone	Jetstream	Comments
1	North	✓	✓	X	X	X	√ moderate	X	X	
2	South	✓	✓	X	X	X	√ Weak	X	X	
3	West	✓	✓	X	X	X	√ Weak	X	X	
4	East	✓	✓	X	X	X	√ Weak	X	X	
5	central	✓	✓	X	X	X	√ Weak	X	X	
6	Northeast	✓	✓	X	✓	X	√ moderate	X	X	
7	Southeast	✓	X	X	X	X	√ Weak	X	X	
8	Northwest	✓	✓	X	X	X	√ Weak	X	X	
9	Southwest	✓	✓	X	X	X	√ Dry	X	X	

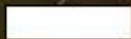
**Details:** According to satellite imagery analysis, the northern, southern, western, eastern, central, northeastern, southeastern, northwestern, and southwestern areas have warm air mass. Some parts of northern, southern, western, eastern, central, northeastern, northwestern, and southwestern areas have dust. Some parts of northeastern areas have cloudy sky. Some parts of northern and northeastern areas have moderate water vapor. The southern, western, eastern, central, southeastern, and northwestern areas have weak water vapor. The southwestern areas are dry.

**Note:** X (Not existing phenomena), √ (exist phenomena)

- Reported by: Sayed Taher Atlas

UTC : 2025-05-19 00:30

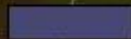
AirMass



Thick,  
high-level cloud



Thick,  
mid-level cloud



Thick,  
low-level cloud



Jet



Cold Airmass



Warm Airmass  
(high UTH)



Warm Airmass  
(low UTH)

R = WV (6.25) - WV (7.1)

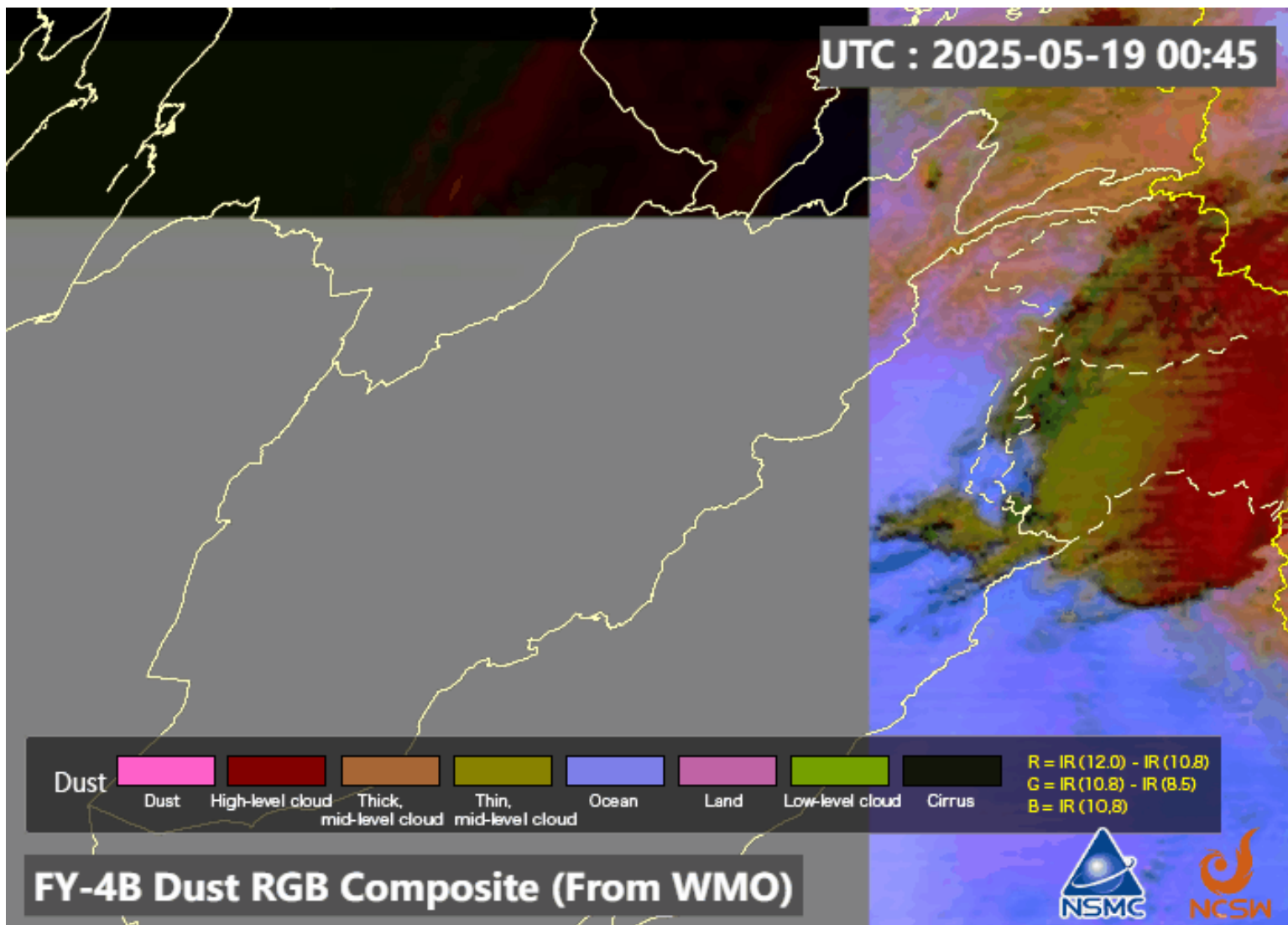
G = IR (9.5) - IR (10.8)

B = WV (6.25)

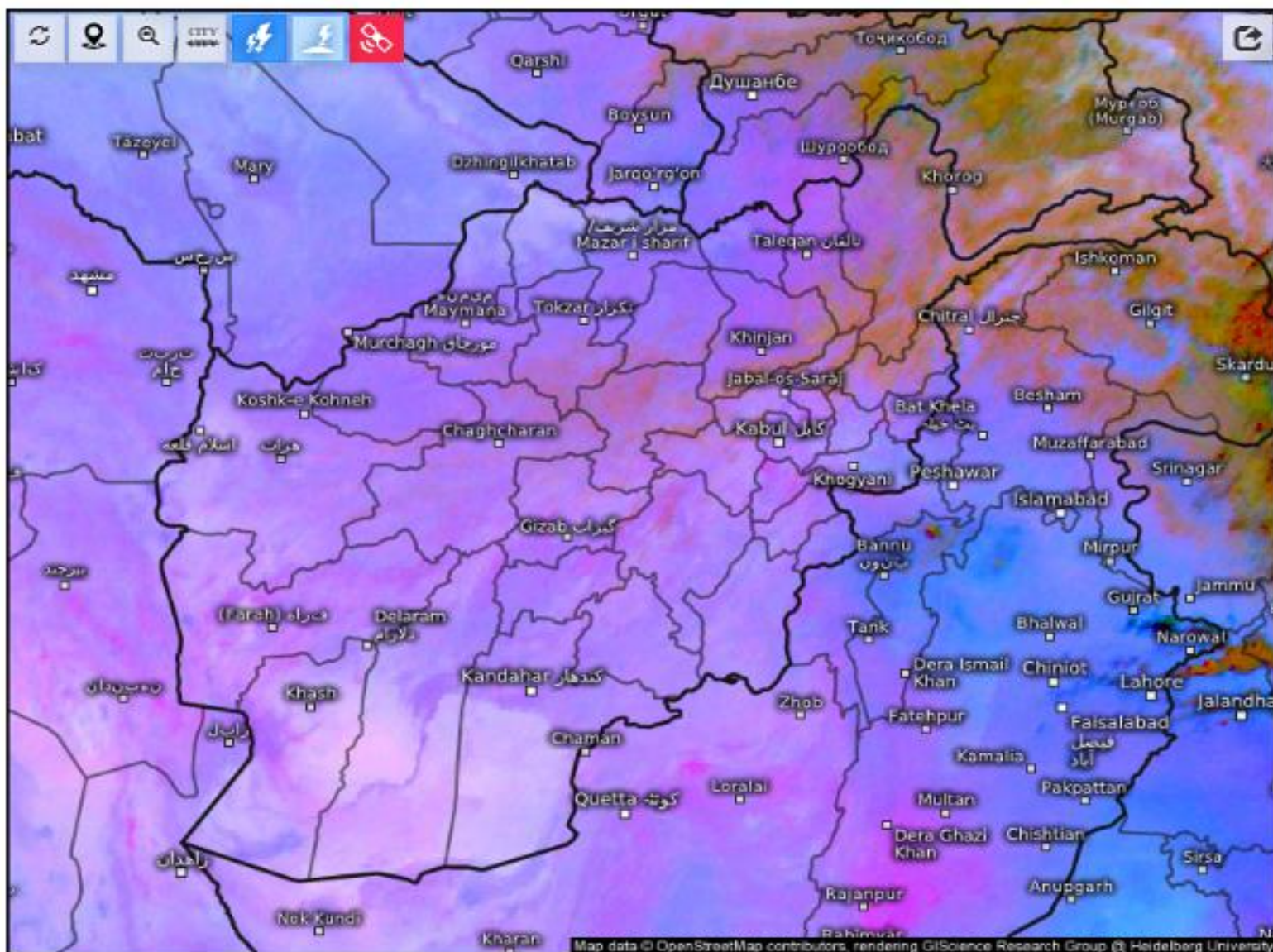
**FY-4B AirMass RGB Composite (From WMO)**



UTC : 2025-05-19 00:45

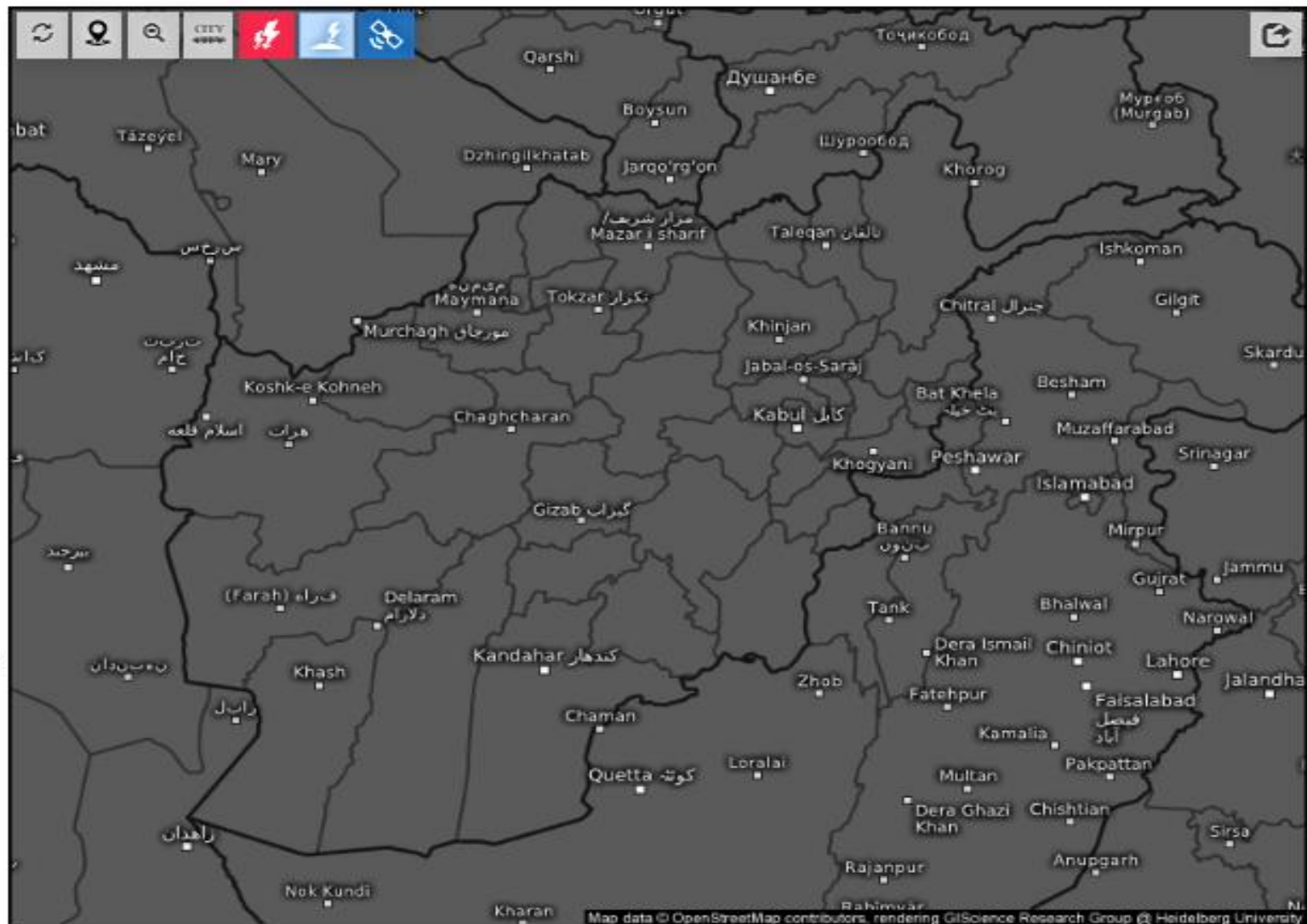






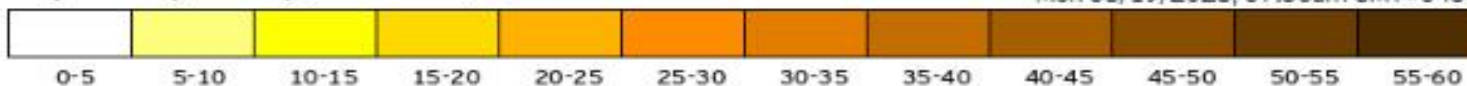
Satellite Dust 

Mon 05/19/2025, 07:30am GMT+0430



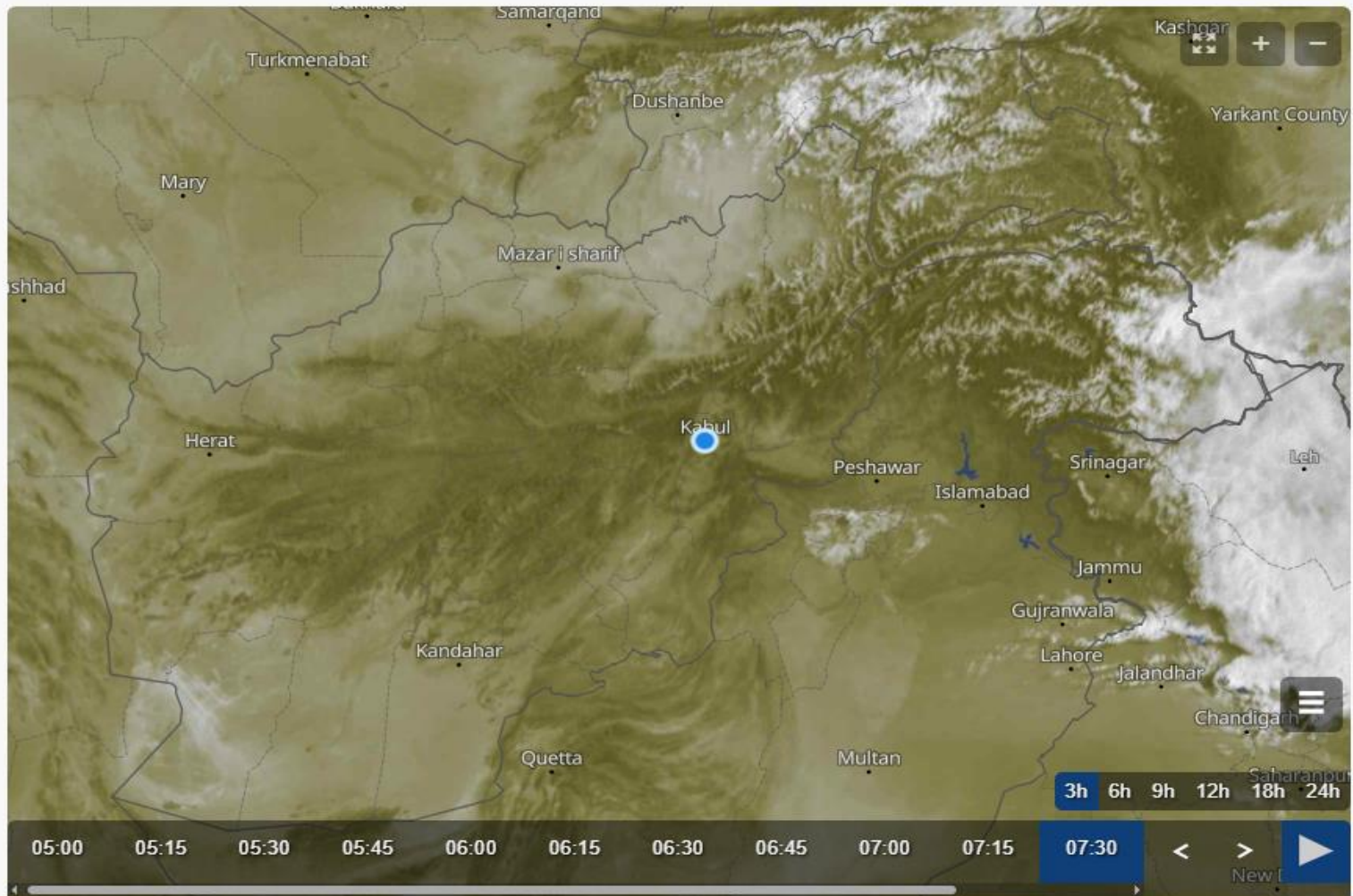
Age of lightning (minutes) 

Mon 05/19/2025, 07:30am GMT+0430



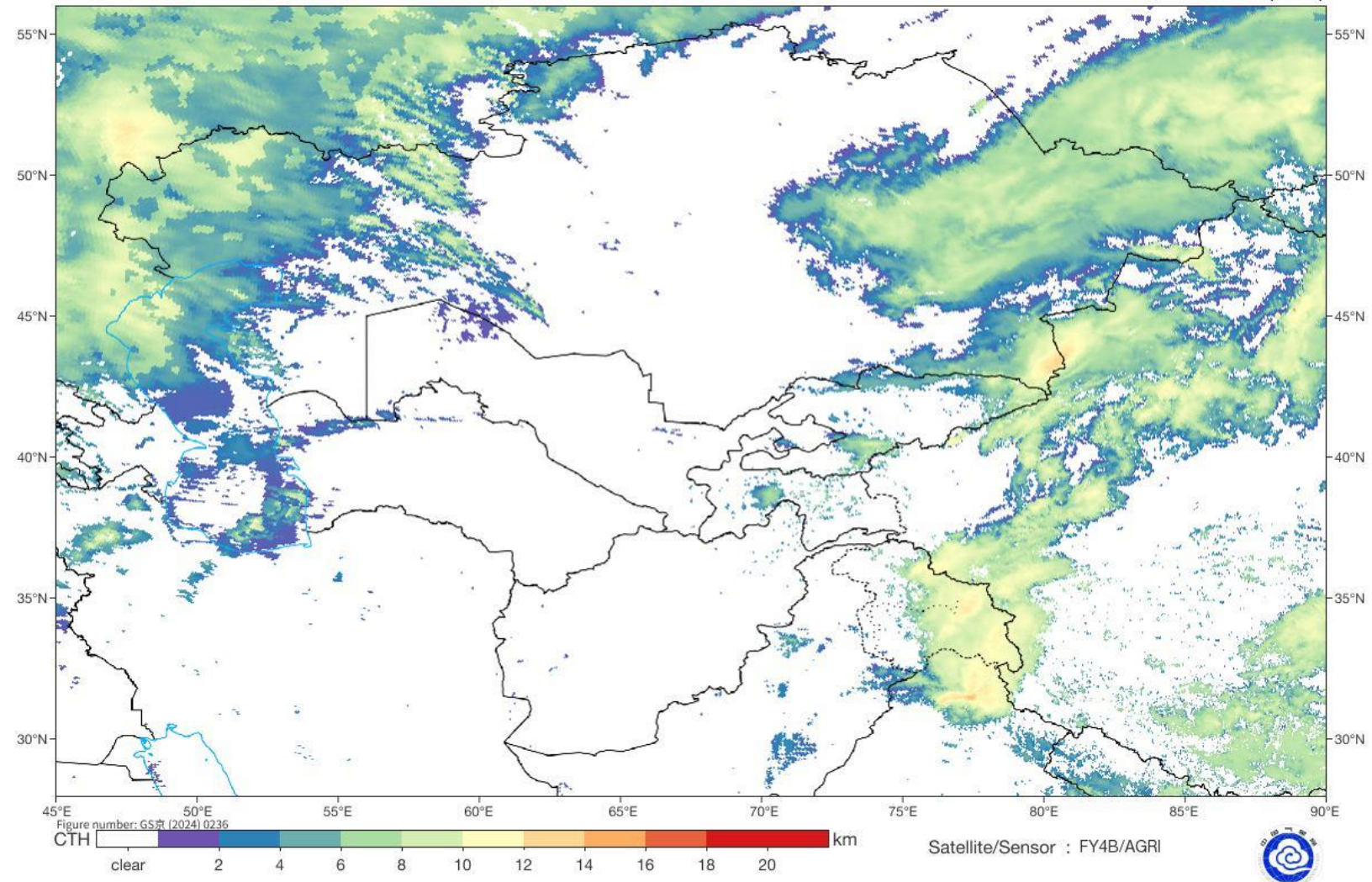


## Live satellite map, Afghanistan



# Cloud Top Height

2025-05-19 03:00(UTC)





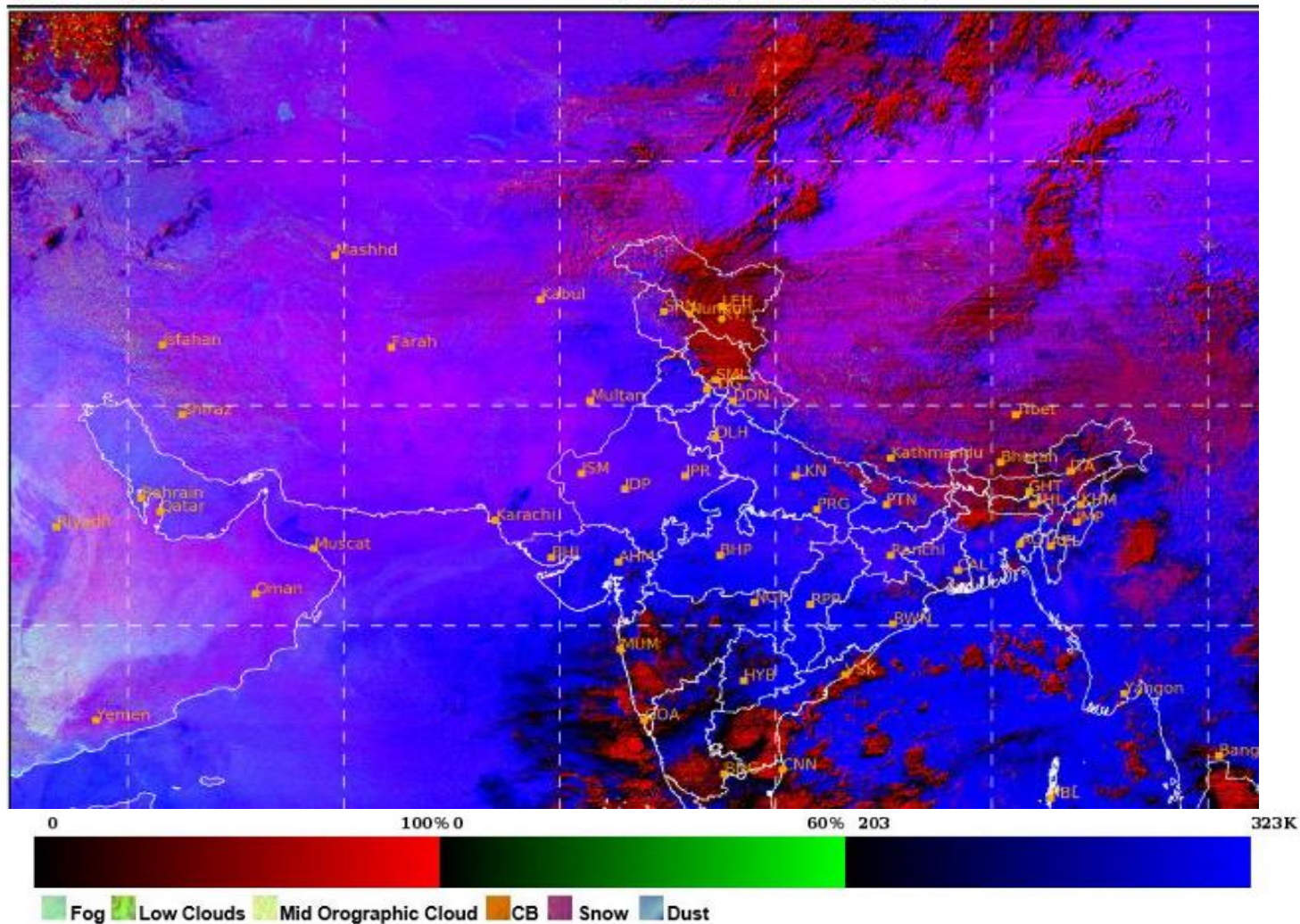
SAT : INSAT-3DR IMG

19-05-2025/(0215 to 0242) GMT

Night Microphysics: TIR2\_BT-TIR1\_BT (R), TIR1\_BT-MIR\_BT (G), TIR1\_BT (B)

L1C Mercator

19-05-2025/(0745 to 0812) IST

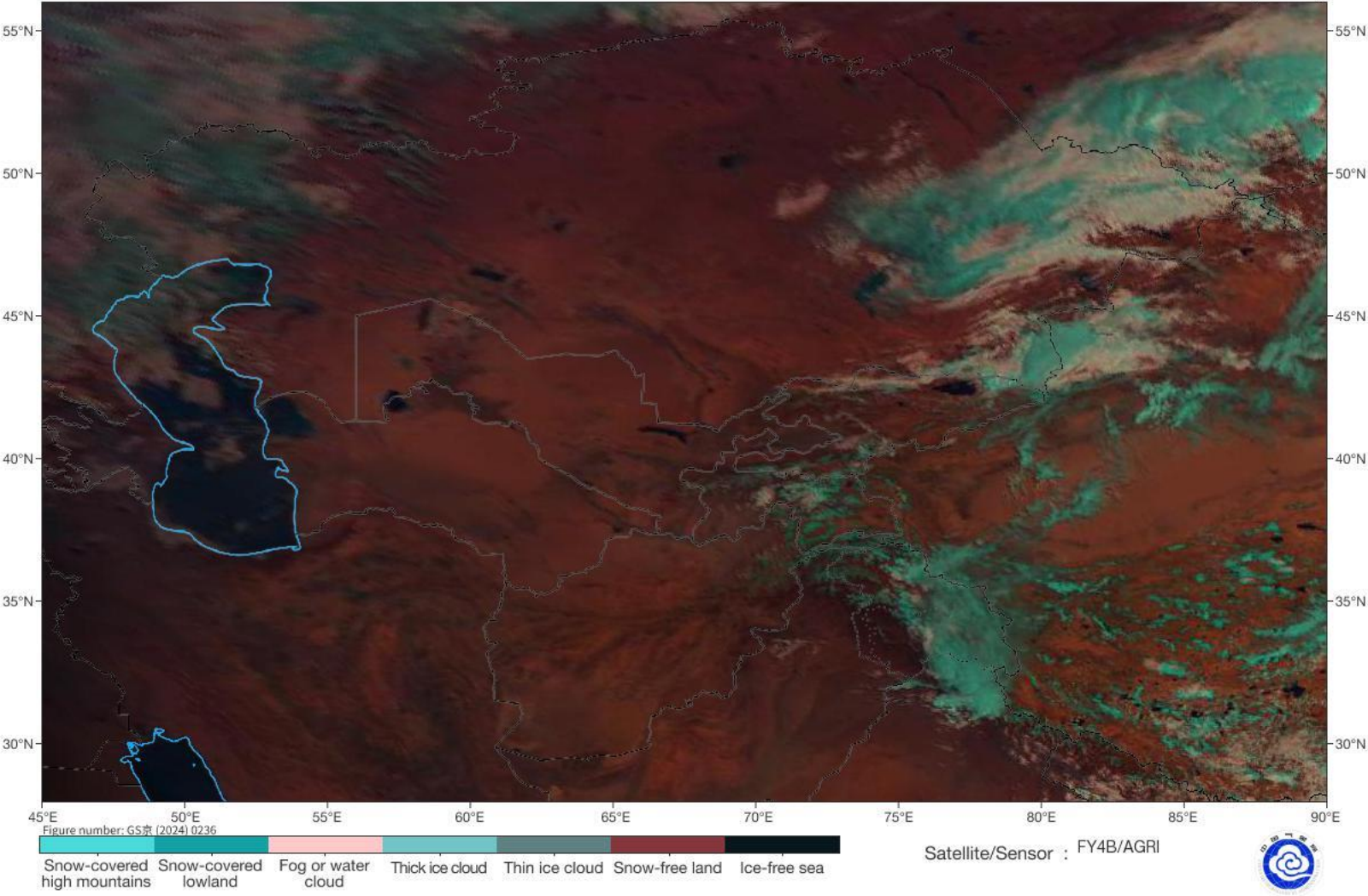




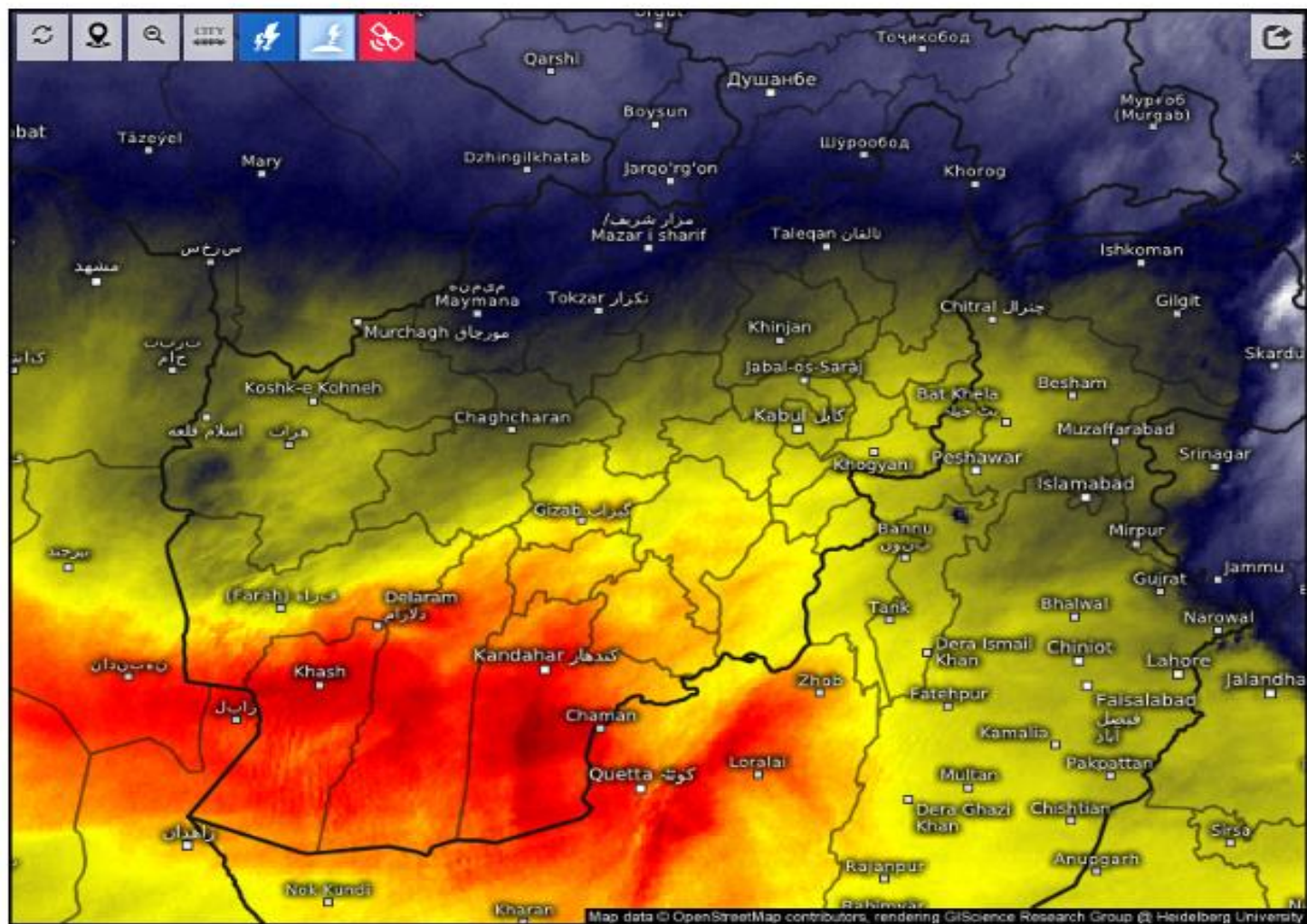
A grayscale satellite map of Asia, primarily focusing on South and Central Asia. The map displays cloud patterns over the landmasses. Major cities are marked with yellow dots and labeled with either their full name or a three-letter airport code. White lines connect many of these cities, indicating flight routes. Labeled cities include Mashhad, Kabul, Tehran, Herat, Kandahar, Multan, Islamabad (ISL), Delhi (DEL), Dhaka (DHA), Mumbai (BOM), Chennai (MAA), Kolkata (CCU), Singapore (SIN), Hong Kong (HKG), Seoul (SEL), Tokyo (NRT), Osaka (KIX), Taipei (TPE), Manila (MNL), Bangkok (BKK), Jakarta (CGK), Kuala Lumpur (KUL), Colombo (CMB), Sri Lanka (MLE), Maldives (MLE), Oman (MUS), Bahrain (BAH), Qatar (DOH), Saudi Arabia (JED, DMM, RUH), Yemen (ADN), India (various codes like BOM, DEL, MUM, CHX, BLR, HYD, COK, TRV, JAI, IXR, KHI, SMO, DP, IPR, DLH, PRG, KNU, RTW, RNC, CAL, BHO, BHP, GND, PDP, BVB, BSK, BTO, BCB, BDB, BDI, BFI, BFL, BHM, BIR, BJA, BKO, BKN, BLD, BLE, BLI, BLN, BLS, BLT, BLV, BLW, BLX, BLZ, BMC, BMF, BMI, BML, BMR, BMN, BMT, BMV, BMW, BMY, BMZ, BOB, BOI, BOL, BOM, BON, BOS, BOT, BOU, BOV, BOY, BOZ, BRB, BRE, BRI, BRJ, BRK, BRN, BRO, BRQ, BRU, BRV, BRW, BRX, BRZ, BSB, BSE, BSG, BSH, BSJ, BSK, BSL, BSN, BST, BSX, BTA, BTB, BTC, BTD, BTE, BTF, BTG, BTH, BTI, BTK, BTL, BTM, BTN, BTR, BTS, BTV, BTW, BTX, BTZ, BUQ, BUR, BUS, BUT, BVA, BVF, BVH, BVI, BVK, BVL, BVN, BVO, BVV, BWB, BWI, BWJ, BWL, BWX, BWY, BZN, BZZ, CAE, CAD, CAF, CAG, CAH, CAI, CAJ, CAK, CAL, CAM, CAN, CAO, CAP, CAR, CAS, CAT, CAU, CAV, CBP, CBD, CBR, CBC, CBG, CBJ, CBL, CBM, CBN, CBO, CBQ, CBU, CBV, CBW, CBY, CBZ, CCJ, CCD, CCS, CCC, CCK, CCL, CCM, CCN, CCO, CCP, CCQ, CCU, CCV, CCW, CCY, CCZ, CDJ, CDE, CDF, CDC, CDI, CEJ, CED, CEF, CEG, CEH, CEI, CEJ, CEK, CEL, CEM, CEN, CEO, CEP, CEQ, CEU, CEV, CEW, CEY, CEZ, CFJ, CFK, CFL, CFM, CFN, CFO, CFP, CFQ, CFR, CFS, CFT, CFV, CFW, CFY, CFZ, CGJ, CGK, CGM, CGN, CGO, CGP, CGQ, CGU, CGV, CGW, CGY, CGZ, CHJ, CHK, CHL, CHM, CHN, CHO, CHP, CHQ, CHR, CHS, CHT, CHV, CHW, CHY, CHZ, CIJ, CID, CIF, CIG, CIH, CII, CIM, CIN, CIO, CIP, CIQ, CIR, CIS, CIT, CIV, CIW, CIY, CIZ, CJJ, CKJ, CKL, CKM, CKN, CKO, CKP, CKQ, CKR, CKS, CKT, CKV, CKW, CKY, CKZ, CLJ, CLK, CLM, CLN, CLO, CLP, CLQ, CLR, CLS, CLT, CLV, CLW, CLY, CLZ, CMJ, CMK, CML, CMN, CMO, CMP, CMQ, CMR, CMS, CMT, CMV, CMW, CMY, CMZ, CNJ, CNK, CNL, CNM, CNN, CNO, CNP, CNQ, CNR, CNS, CNT, CNV, CNW, CNY, CNZ, COJ, COK, COL, COM, CON, COP, COQ, COR, COS, COT, COV, COW, COY, COZ, CPJ, CPK, CPL, CPM, CPN, CPO, CPP, CPQ, CPR, CPS, CPT, CPV, CPW, CPY, CPZ, CRJ, CRK, CRM, CRN, CRO, CRP, CRQ, CRR, CRS, CRT, CRV, CRW, CRY, CRZ, CSJ, CSK, CSL, CSN, CSO, CSP, CSQ, CSR, CSS, CST, CSV, CSW, CSY, CSZ, CTJ, CTK, CTL, CTM, CTN, CTC, CTP, CTQ, CTR, CTS, CTT, CTV, CTW, CTY, CTZ, CUJ, CUK, CUL, CUM, CUN, CUO, CUP, CUQ, CUR, CUT, CVJ, CVK, CVM, CVN, CVO, CVP, CVQ, CVR, CVS, CVT, CVV, CVW, CVY, CVZ, CWJ, CWK, CWM, CWN, CWO, CWP, CWQ, CWR, CWS, CWT, CWV, CWW, CWY, CWZ, CXJ, CXK, CXL, CXM, CXN, CXO, CXP, CXQ, CXR, CXS, CXT, CXV, CXW, CXY, CXZ, CYJ, CYK, CYL, CYM, CYN, CYO, CYP, CYQ, CYR, CYS, CYT, CYV, CYW, CYX, CYZ, CZJ, CZK, CZL, CZM, CZN, CZO, CZP, CZQ, CZR, CZS, CZT, CZV, CZW, CZY, CZZ.

Fog Identification

2025-05-19 03:00(UTC)







## Satellite Water Vapor

Mon 05/19/2025, 07:30am GMT+0430

